

KV-27TS27/27TS31

RM-791

RM-Y101

SERVICE MANUAL

US Model

KV-27TS27

Chassis No. SCC-E54A-A

KV-27TS31

Chassis No. SCC-E54B-A

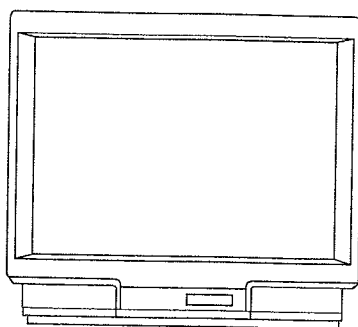
Canadian Model

KV-27TS27

Chassis No. SCC-E65A-A

KV-27TS31

Chassis No. SCC-E65B-A



KV-27TS31



RM-Y101

LN-1 CHASSIS

MODELS OF THE SAME SERIES

KV-27TS27

KV-27TS31

SPECIFICATIONS

Television system
Channel coverage

American TV standards

VHF: 2-13

UHF: 14-69

Cable TV: 1-125

Picture tube

Microblack™ Trinitron® tube

27-inch picture measured

diagonally

28-inch picture tube measured

diagonally (KV-27TS27, KV-27TS31)

75-ohm antenna terminal for VHF/UHF

VIDEO and S VIDEO

S VIDEO in (4-pin mini DIN)

Y: 1 Vp-p, 75-ohms

unbalanced, sync negative

C: 0.286 Vp-p (Burst signal), 75-ohms

Video (phono jacks): 1 Vp-p, 75-ohms

unbalanced, sync negative

Audio (phono jacks): 500mVrms

(100% modulation)

Impedance: 47 kilohms

Output

AUDIO OUT (VARIABLE) (phono jacks)

More than 408 mVrms at the maximum

volume setting (variable)

Impedance: 5 kilohms

Speaker output

5W x 2

Speaker size

KV-27TS27

Full range

120 x 60 mm (4 3/4 x 2 3/8 in.) x 2 units (OVAL)

KV-27TS31

Full range

120 x 60 mm (4 3/4 x 2 3/8 in.) x 2 units (OVAL)

Audio frequency response

KV-27TS27

FRONT (About) 80 Hz - 20 KHz

KV-27TS31

FRONT (About) 80 Hz - 20 KHz

Power requirements

120V AC, 60 Hz

Power consumption

KV-27TS27 160W

KV-27TS31 160W

Standby mode 5W

Dimensions (w/h/d)

KV-27TS27

660.5 x 602.5 x 465.5mm

(26 1/8 x 23 3/4 x 18 3/8 in.)

KV-27TS31

660.5 x 602.5 x 468 mm

(26 1/8 x 23 3/4 x 18 1/2 in.)

Weight

KV-27TS27 46 kg (99 lbs 4 oz)

KV-27TS31 46 kg (99 lbs 4 oz)

Supplied accessories

KV-27TS27

Remote Commander RM-791 (1) with 2 size AA

(R6) batteries

KV-27TS31

Remote Commander RM-Y101 (1) with 2 size

AA (R6) batteries

Recommended accessories

U/V mixer EAC-66

Connecting cable

VMC-810/820S, YC-15 V/30V, RK-74A

Design and specifications are subject to change without notice.

TRINITRON® COLOR TV
SONY®



SECTION 4

SAFETY RELATED ADJUSTMENT

☒ R542, CONFIRMATION METHOD (HOLD-DOWN CONFIRMATION) AND READJUSTMENTS

The following adjustments should always be performed when replacing the following components (marked with ☒ on the schematic diagram). IC601, PM501, Q605, Q606, C536, R620, R621, R629, R630, R639, R542, R546

(1) Preparation before confirmation

1. Remove R620 on the D board and connect a variable resistor (RV1: about 10k Ω) between pin ① of IC601 and B+ line.
2. Supply 120 \pm 2.0 V AC to with variable autotransformer.

(2) Hold-down operation confirmation

1. Turn the POWER switch ON, and receive entirely white signals and adjust ABL current to 1650 \pm 20 μ A with PICTURE and BRIGHT etc controls.
2. Increase B +line voltage gradually by adjusting the resistor of RV1. Confirm that the minimum voltage is less than 144.0V DC whereby the raster disappears during operation of hold-down circuit.

NOTE:

When the hold-down circuit starts operating, switch OFF the POWER of the set immediately.

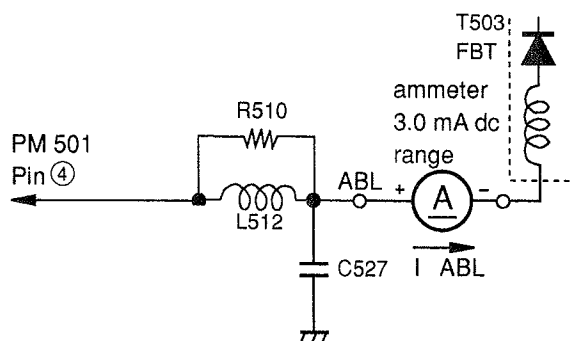
3. Turn the POWER switch ON, and receive dot signals and adjust ABL current to 150 \pm 20 μ A with PICTURE and BRIGHT etc controls.
4. Increase B +line voltage gradually by adjusting the resistor of RV1. Confirm that the minimum voltage is less than 148.0V DC whereby the raster disappears during operation of hold-down circuit.

NOTE:

When the hold-down circuit starts operating, switch OFF the POWER of the set immediately.

(3) Hold-down readjustment

When step (2) is not satisfied, readjustment should be performed by altering the resistance value of R542 (a component marked with ☒).



☒ R543 CONFIRMATION METHOD (HOLD-DOWN CONFIRMATION) AND READJUSTMENTS

The following adjustments should always be performed when replacing the following components (marked with ☒ on the schematic diagram). IC601, Q605, Q606, PM501, D507, C535, C536, C639, R520, R543, R546, R620, R621, R629, R630, T503

(1) Preparation before confirmation

1. Turn the POWER switch ON, and receive entirely white signals and set the PICTURE and BRIGHT controls to maximum.
2. Confirm that voltage of the check terminal of pin ① of D-15 is more than 115.0V DC when the set is operating normally with 120.0 \pm 2.0V AC supply.

(2) Hold-down operation confirmation

1. Turn the POWER switch ON, and receive entirely white signals and adjust ABL current to 1650 \pm 20 μ A with PICTURE and BRIGHT etc controls.
2. Apply DC voltage of over 130V DC gradually to the check terminal of pin ① of D-15 via 1T40 from the DC stabilized power source.

Confirm that the minimum voltage is less than 140.0V DC whereby the raster disappears during operation of hold-down circuit.

NOTE:

When the hold-down circuit starts operating, switch OFF the POWER of the set immediately.

3. Turn the POWER switch ON, and receive dot signals and adjust ABL current to 150 \pm 20 μ A with PICTURE and BRIGHT etc controls.
4. Apply DC voltage of over 130V gradually to the check terminal of pin ① of D-15 via 1T40 from the DC stabilized power source. Confirm that the minimum voltage is less than 140.5V DC whereby the raster disappears during operation of hold-down circuit.

NOTE:

When the hold-down circuit starts operating, switch OFF the POWER of the set immediately.

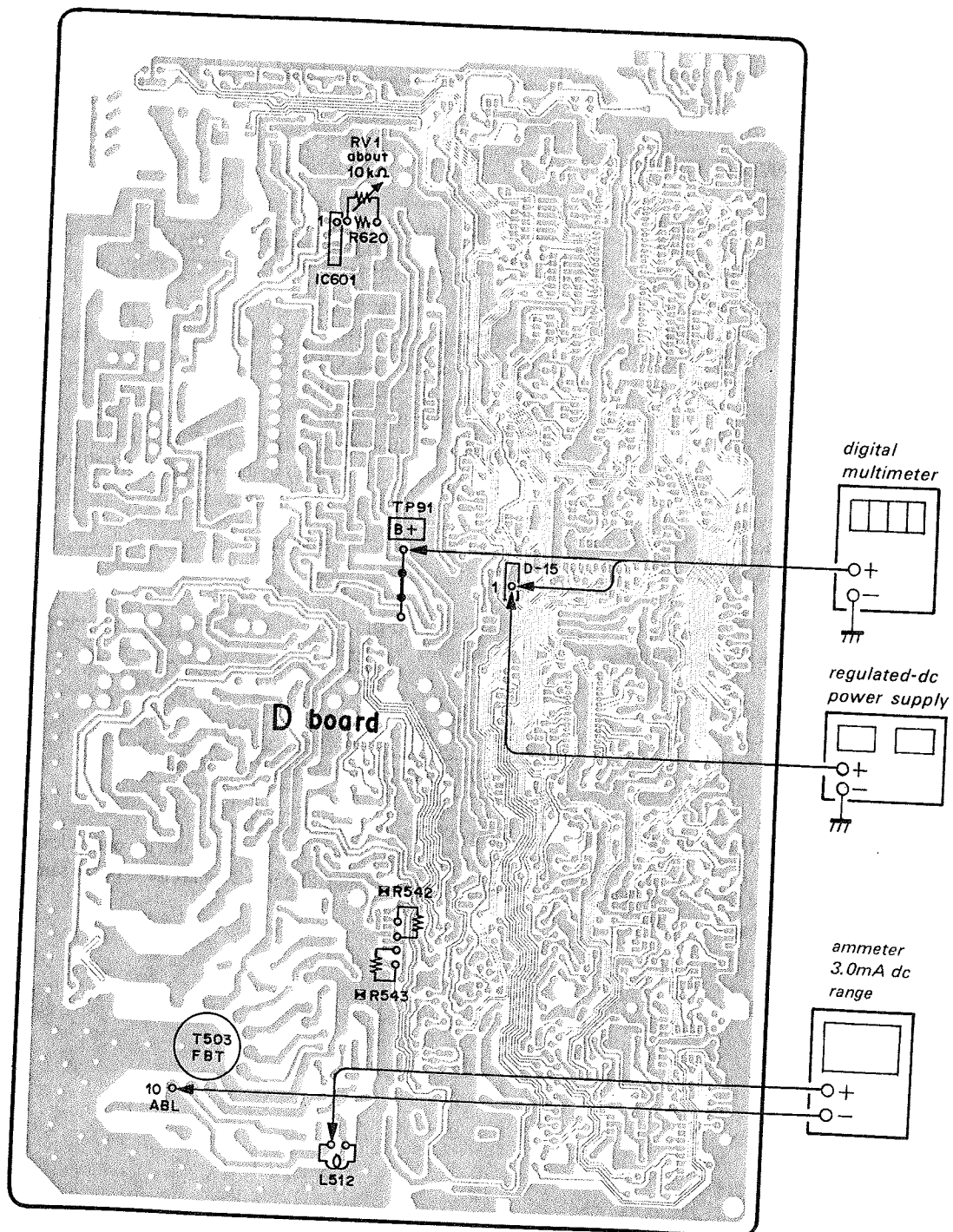
(3) Hold-down readjustment

When step 2 is not satisfied, readjustment should be performed by altering the resistance value of R543 (a component marked with ☒).

B+ VOLTAGE CONFIRMATION

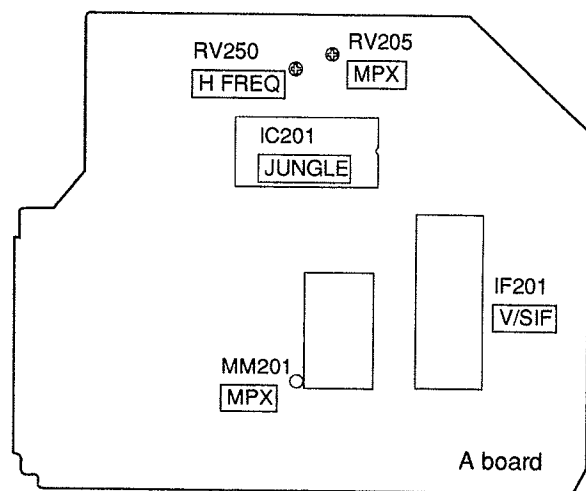
The following adjustments should always be performed when replacing IC601 and R620.

1. Supply $130^{+2.0}_0$ V AC to with variable auto-transformer.
2. Receive entirely monoscope signal.
3. Set the PICTURE control and BRIGHT controls in to initial reset.
4. Confirm the voltage of +B Line is less than 137.0V DC.
5. If step 4 is not satisfied, replace IC601 and R620 repeat above steps.



SECTION 5 CIRCUIT ADJUSTMENTS

5-1. A BOARD ADJUSTMENTS

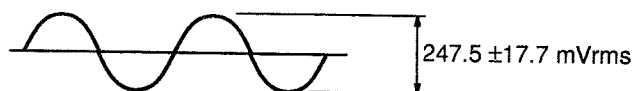


RF AGC ADJUSTMENT

1. Receive an off-air signal.
2. Adjust AGC VR (AGC VR of IF201) so that snow noise and cross-modulation just disappear from the picture.

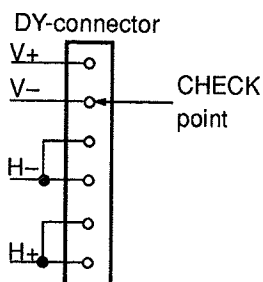
MPX LEVEL ADJUSTMENT (RV205)

1. Receive 400Hz (100% modulation) sound signal.
2. Connect an RMS meter to pin 12 of MM201.
3. Adjust RV205 so that the MPX level is 247.5 ± 17.7 mVrms.

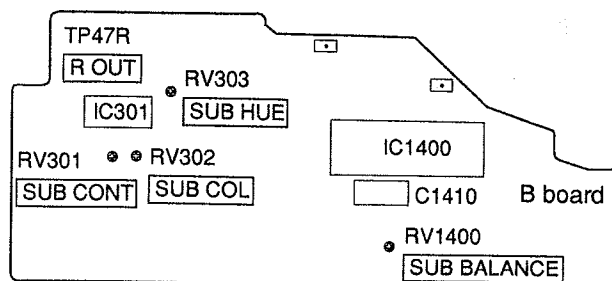


H.FREQ ADJUSTMENT (RV250)

1. Receive an off air signal.
2. Short circuit between TP (Y SYNC) and TP (12V) with a jumper wire.
3. Adjust RV250 for 15.734 kHz ± 50 Hz on the frequency counter.
4. Disconnect a jumper wire from TP (SYNC) and TP (12V).

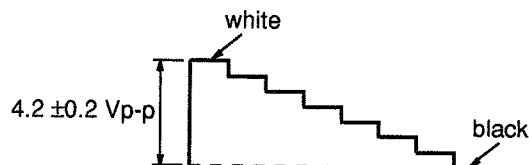


5-2. B BOARD ADJUSTMENTS



SUB CONTRAST ADJUSTMENT (RV301)

1. Receive a color-bar signal.
PICTURE MAX
BRT CENTER
COLOR MIN
SHARP MIN
2. Connect an oscilloscope to the TP47R (R OUT).
3. Adjust RV301 (SUB CONT) so that voltage is 4.2 ± 0.2 Vp-p.

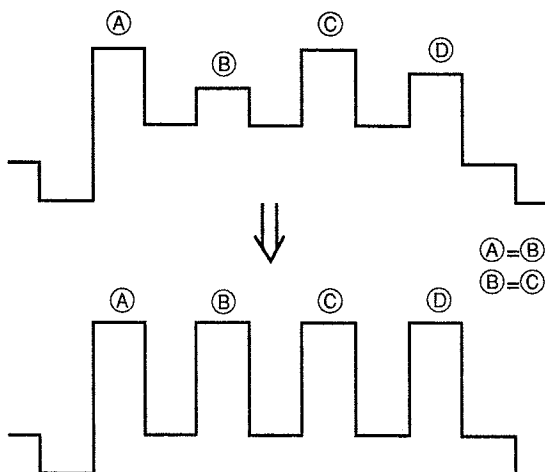


SUB BALANCE ADJUSTMENT (RV1400)

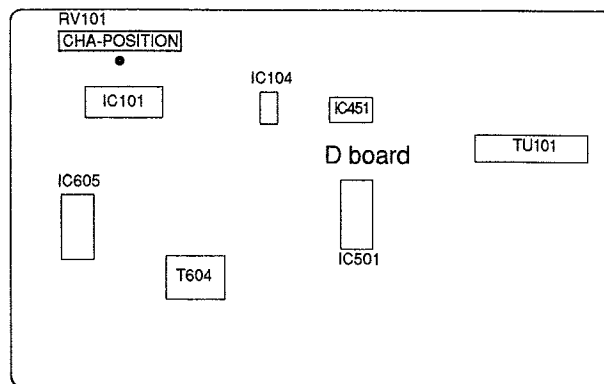
1. Input 400 Hz 200mVrms signal.
2. Adjust RV1400 (SUB-BALANCE) so that the output level of ② pin B-4 connector and ② pin B-2 connector to be the same level.

SUB COLOR AND SUB HUE ADJUSTMENTS (RV302, 303)

1. Receive a color bar signal.
2. Set PICTURE and BRT to normal.
3. Connect an oscilloscope to the TP47R (R OUT).
4. Adjust RV302 (SUB-COL) and RV303 (SUB-HUE) to be the same level.



5-3. D BOARD ADJUSTMENTS



CHARACTER POSITION (RV101)

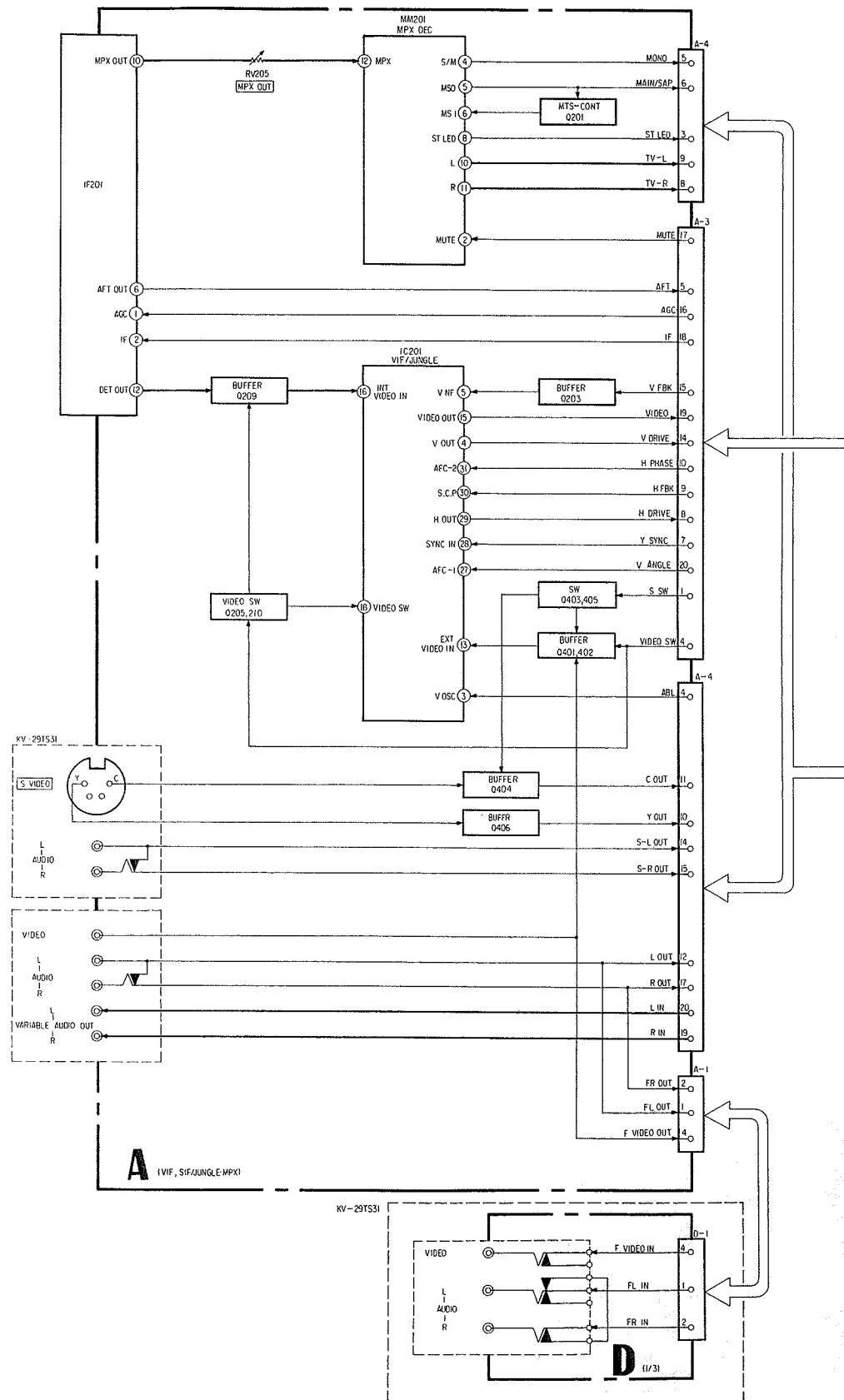
1. Receive a color-bar signal.
2. Set the PICTURE control to maximum setting and set the BRIGHTNESS control to center click position.
3. Press the PICTURE control button until this picture level becomes maximum.
4. Adjust RV101 as shown in Fig. 1.

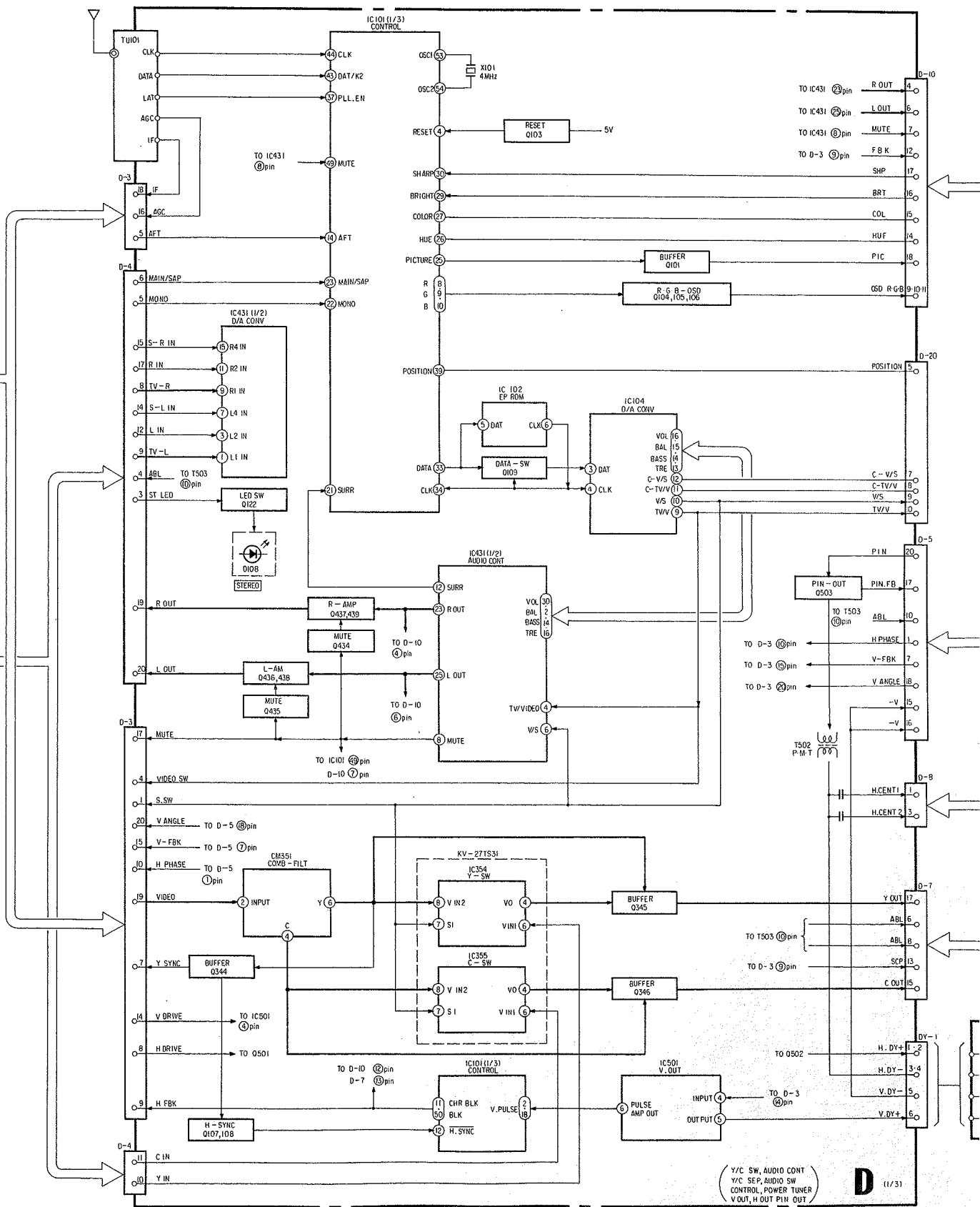


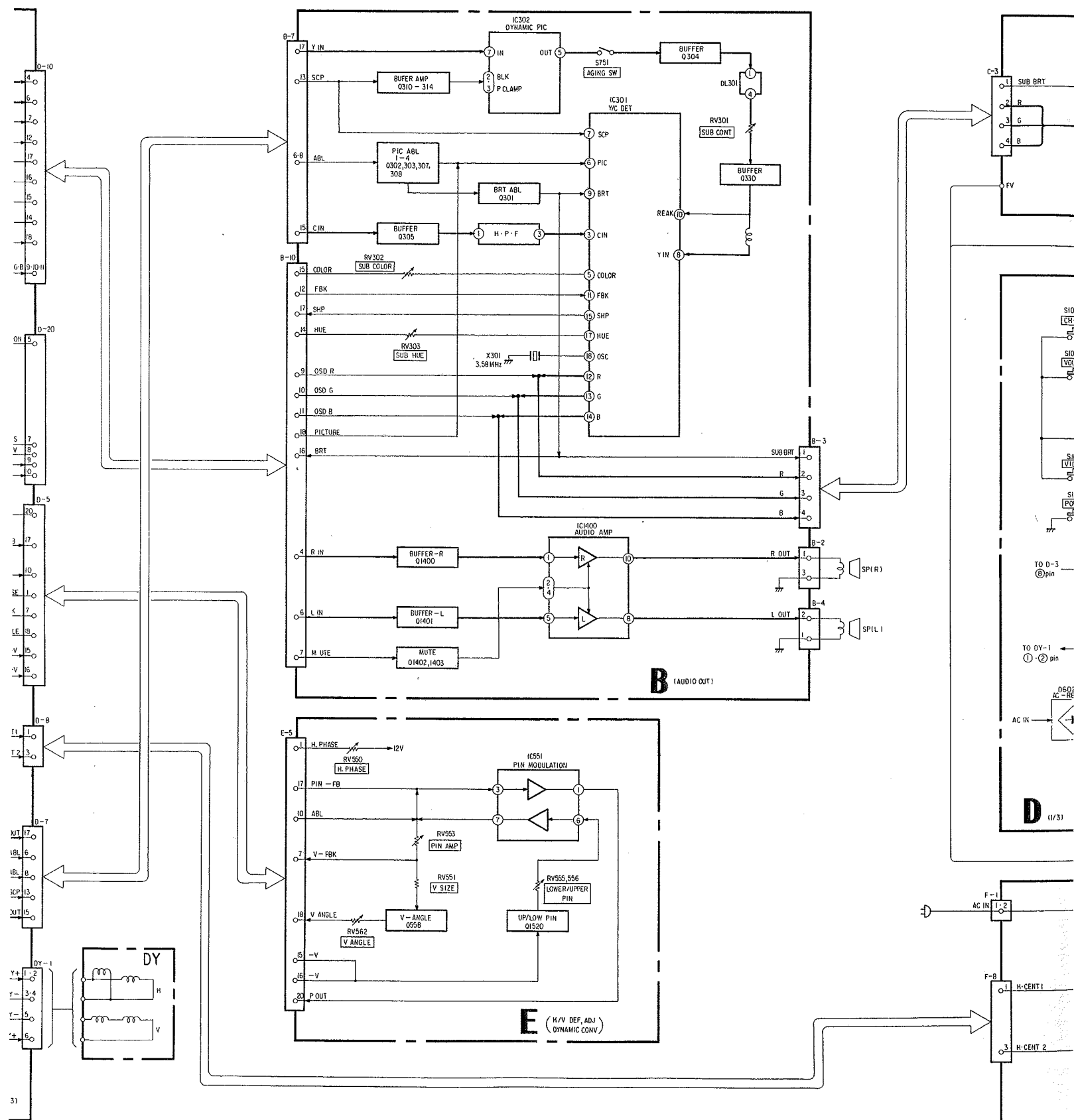
Fig. 1

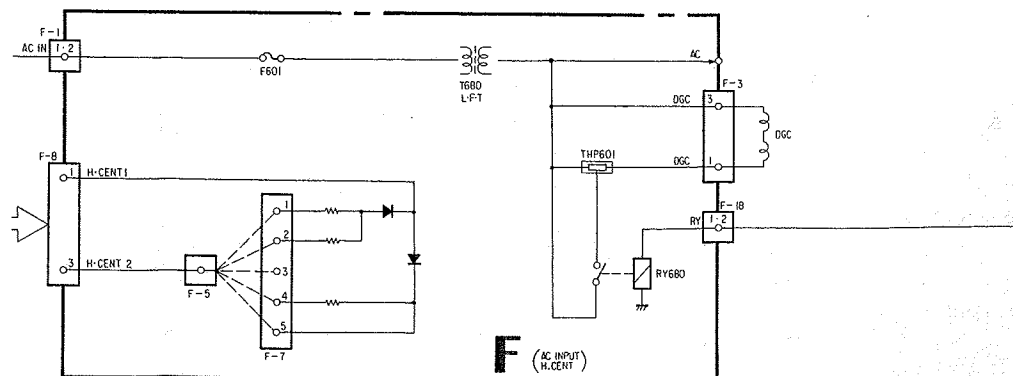
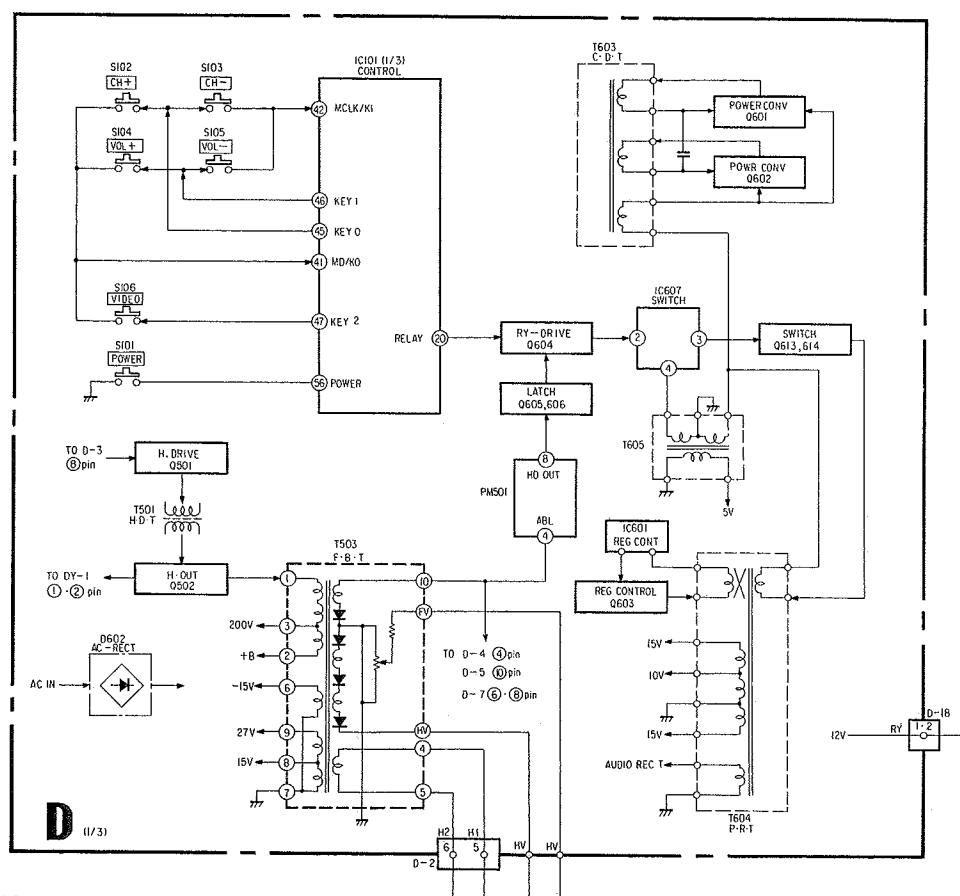
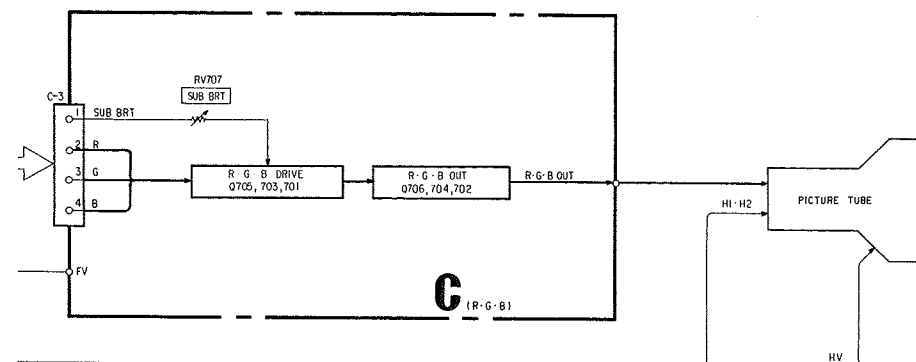
SECTION 6 DIAGRAMS

6-1. BLOCK DIAGRAM

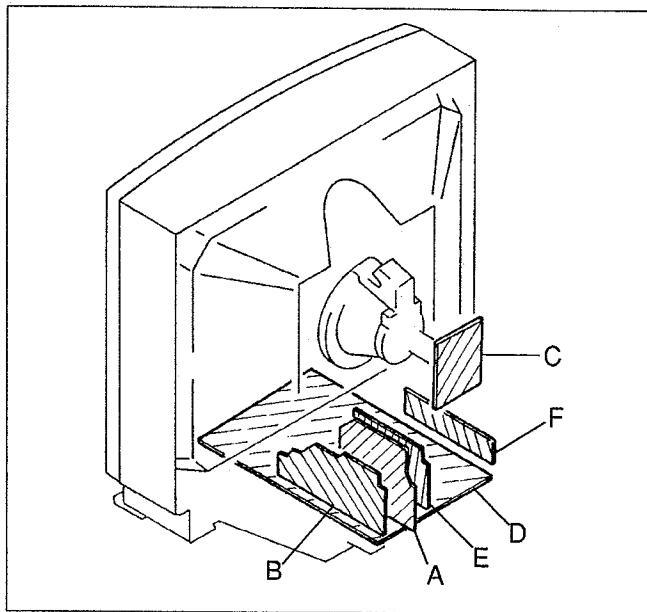








6-2. CIRCUIT BOARDS LOCATION



Part replaced (■)	Adjustment (▣)
IC601, PM501, Q605, Q606, C536, R639, R630, R629, R621, R620, R546, R542	R542 (HOLD-DOWN)
IC601, PM501, Q606, Q605, D507, T503, C639, C536, C535, R630, R629, R621, R620, R543, R546, R520	R543 (HOLD-DOWN)

- All voltages are in V.
- Voltage are dc with respect to ground unless otherwise noted.
- Readings are taken with a 10 M Ω digital multimeter.
- Readings are taken with a color-bar signal input.
- Voltage variations may be noted due to normal production tolerance.
- ———: B+ bus.
- ———: B- bus.
- ———: signal path.

6-3. PRINTED WIRING BOARDS AND SCHEMATIC DIAGRAMS

Note:

- All capacitors are in μ F unless otherwise noted.
pF: μ F 50WV or less are not indicated except for electrolytics.
- Indication of resistance, which does not have one for rating electrical power, is as follows.

Pitch: 5 mm
Rating electrical power 1/4W

- All resistors are in ohms.
- : nonflammable resistor.
- : fusible resistor.
- : internal component.
- : panel designation, and adjustment for repair.
- All variable and adjustable resistors have characteristic curve B, unless otherwise noted.
- The components identified by in this basic schematic diagram have been carefully factory-selected for each set in order to satisfy regulations regarding X-ray radiation. Should replacement be required, replace only with the value originally used.
- When replacing components identified by , make the necessary adjustments indicated. If results do not meet the specified value, change the component identified by and repeat the adjustment until the specified value is achieved. (Refer to R542 and R543 on page 30-31 in the Service Manual.)
- When replacing the part in below table be sure to perform the related adjustment.

Reference information

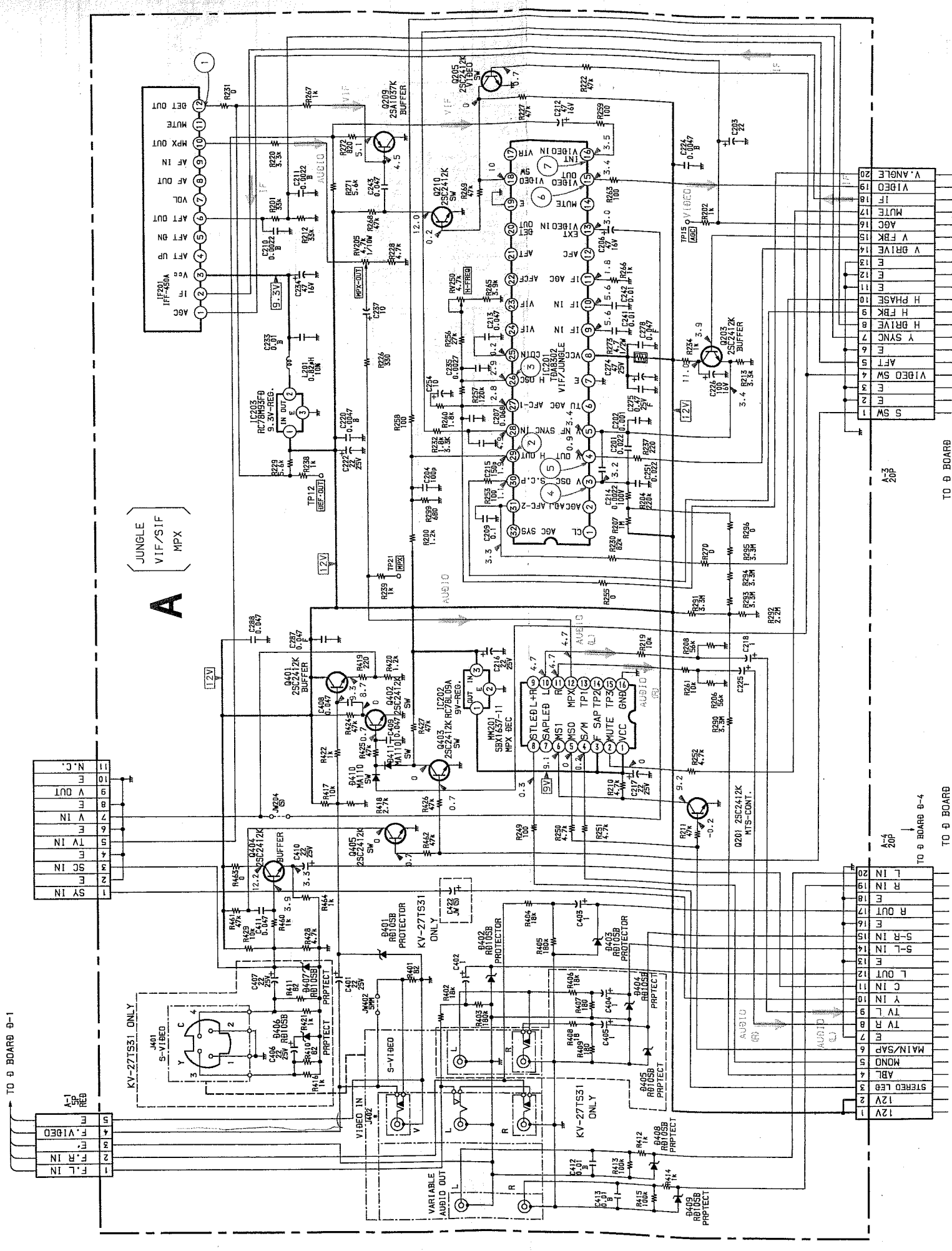
RESISTOR	: RN	METAL FILM
	: RC	SOLID
	: FPRD	NONFLAMMABLE CARBON
	: FUSE	NONFLAMMABLE FUSIBLE
	: RW	NONFLAMMABLE WIREWOUND
	: RS	NONFLAMMABLE METAL OXIDE
	: RB	NONFLAMMABLE CEMENT
COIL	: LF-8L	MICRO INDUCTOR
CAPACITOR	: TA	TANTALUM
	: PS	STYROL
	: PP	POLYPROPYLENE
	: PT	MYLAR
	: MPS	METALIZED POLYESTER
	: MPP	METALIZED POLYPROPYLENE
	: ALB	BIPOLAR
	: ALT	HIGH TEMPERATURE
	: ALR	HIGH RIPPLE

Note:

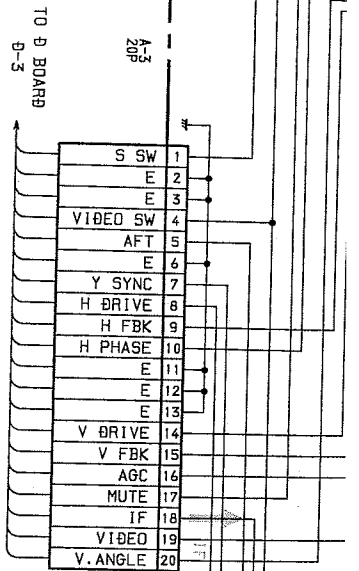
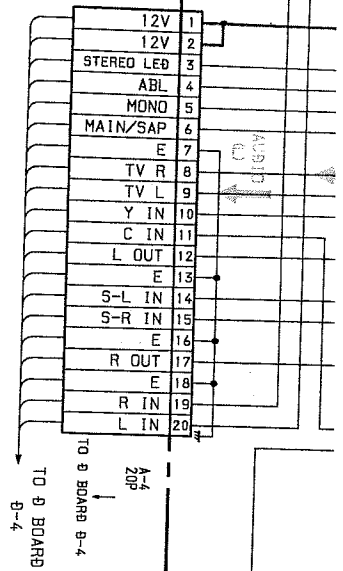
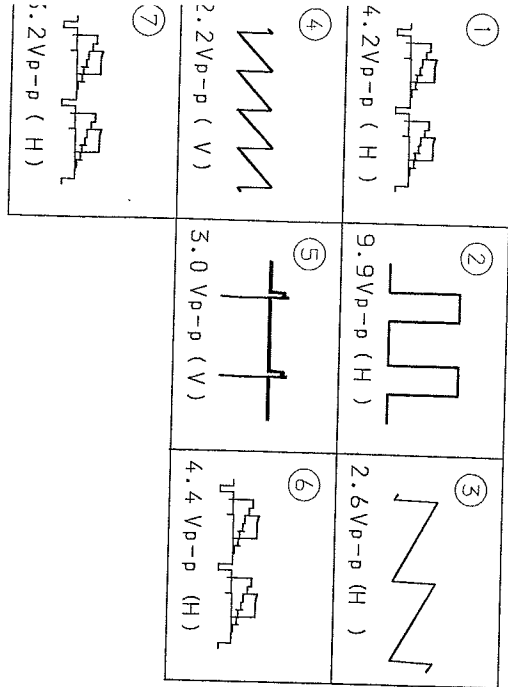
The components identified by shading and mark are critical for safety. Replace only with part number specified.

Note:

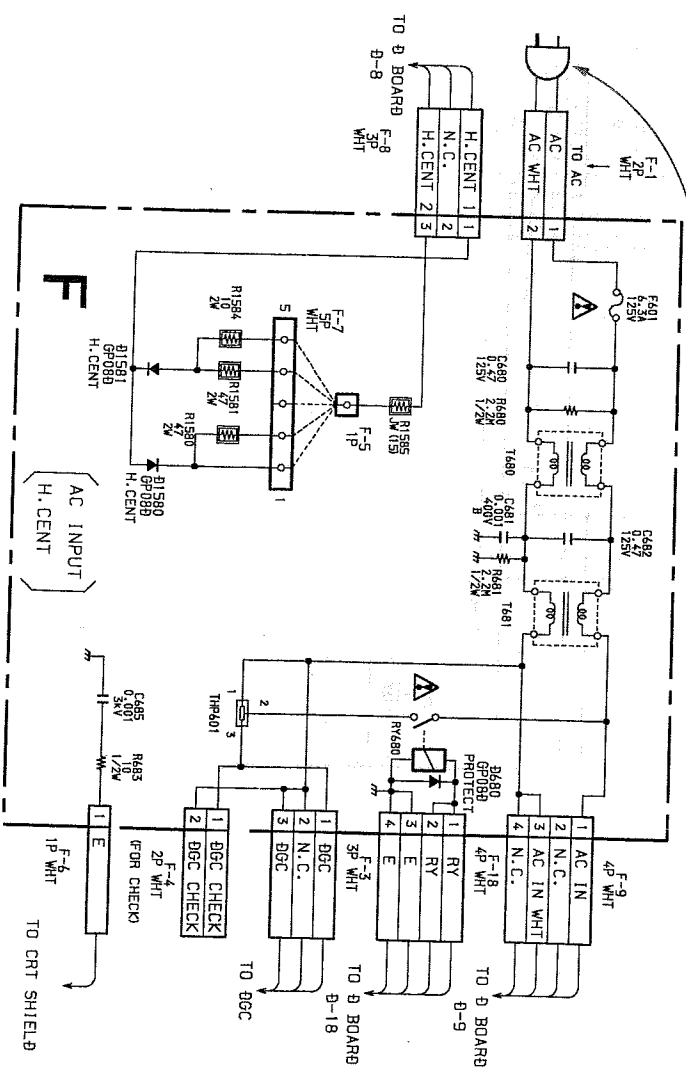
Les composants identifiés par un tramé et une marque sont critiques pour la sécurité. Ne les remplacer que par une pièce portant le numéro spécifié.

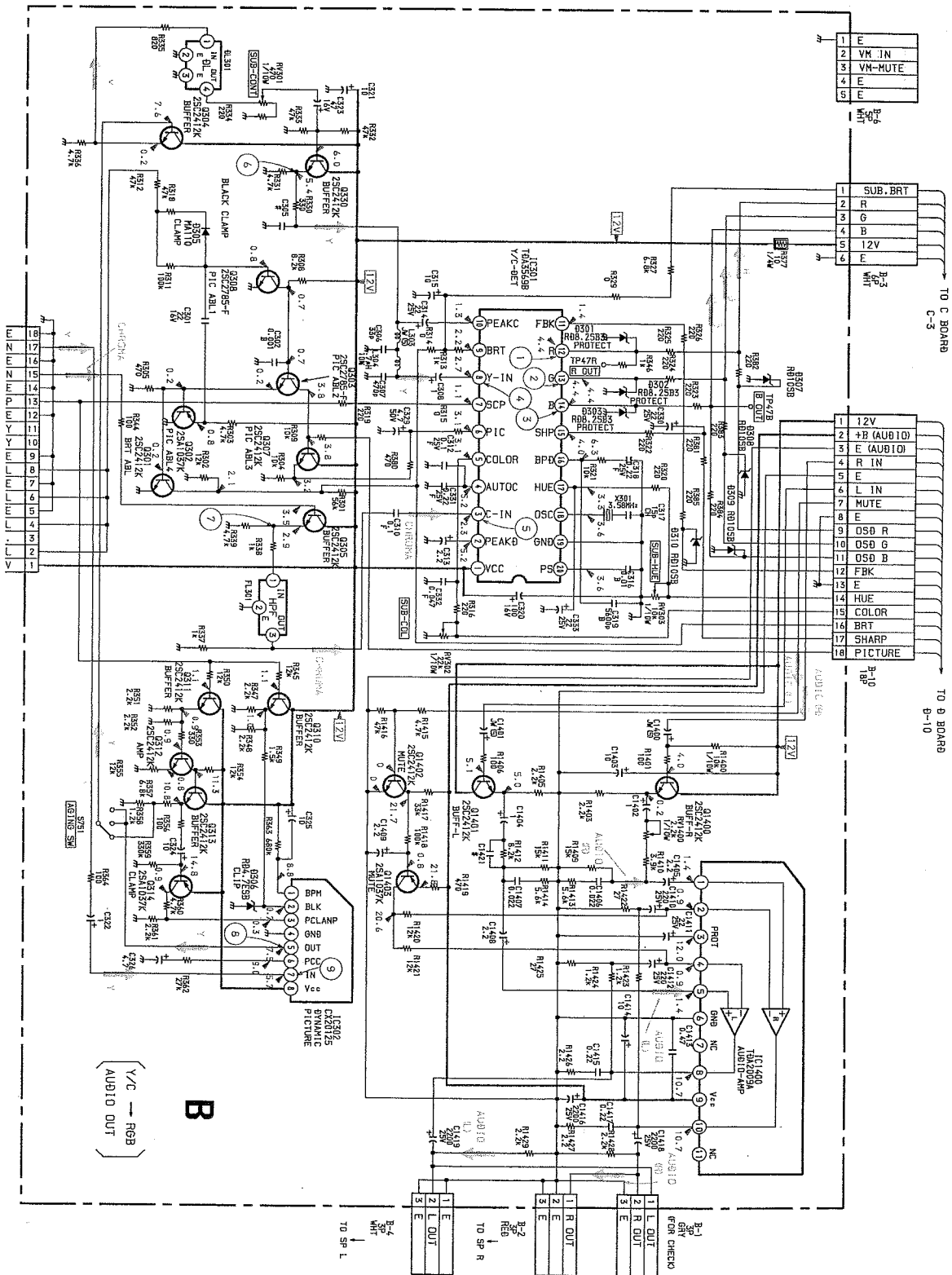


— A Board —



CAUTION (US MODEL ONLY)
This set is equipped with a polarized ac power cord plug (one blade of the plug is wider than the other). When replacing the ac power cord, be sure to connect it with specified part number as shown in this diagram.





B
(V/C → RGB)
AUDIO OUT

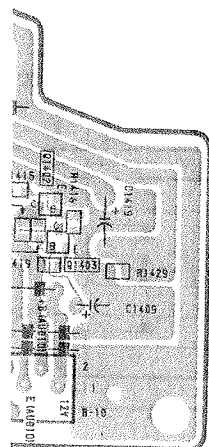
①



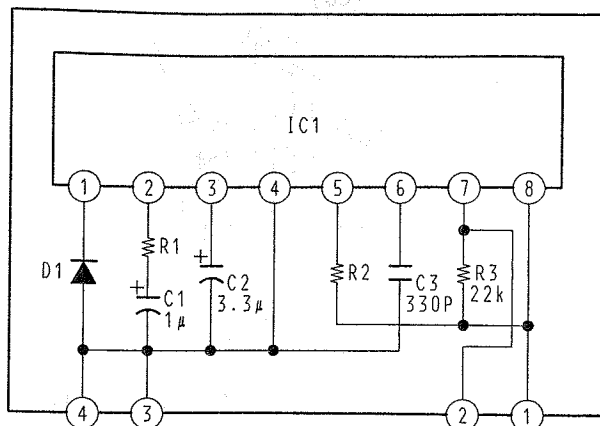
L



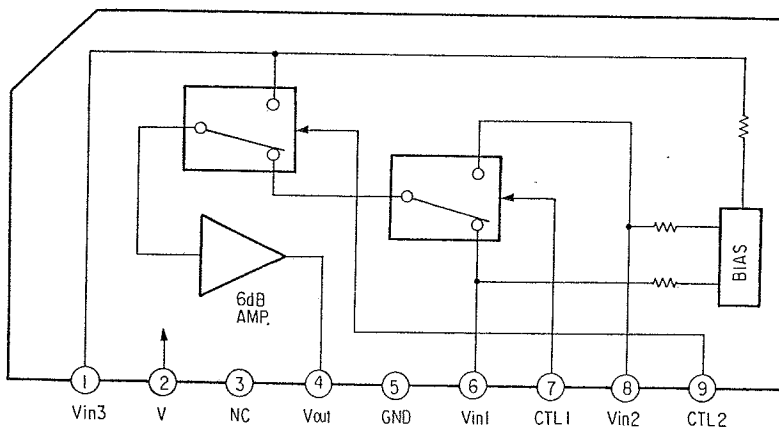
N



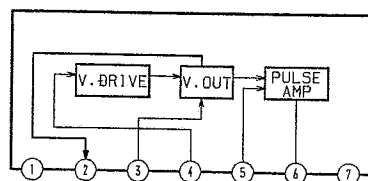
D BOARD IC103 SBX1618-51



D BOARD IC354/355 NJM2245S



D BOARD IC501 AN5521

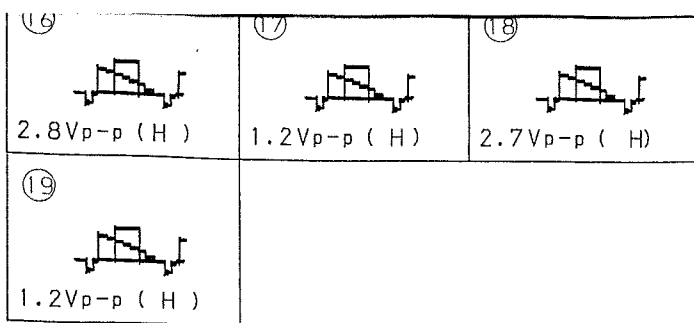


— D Board —

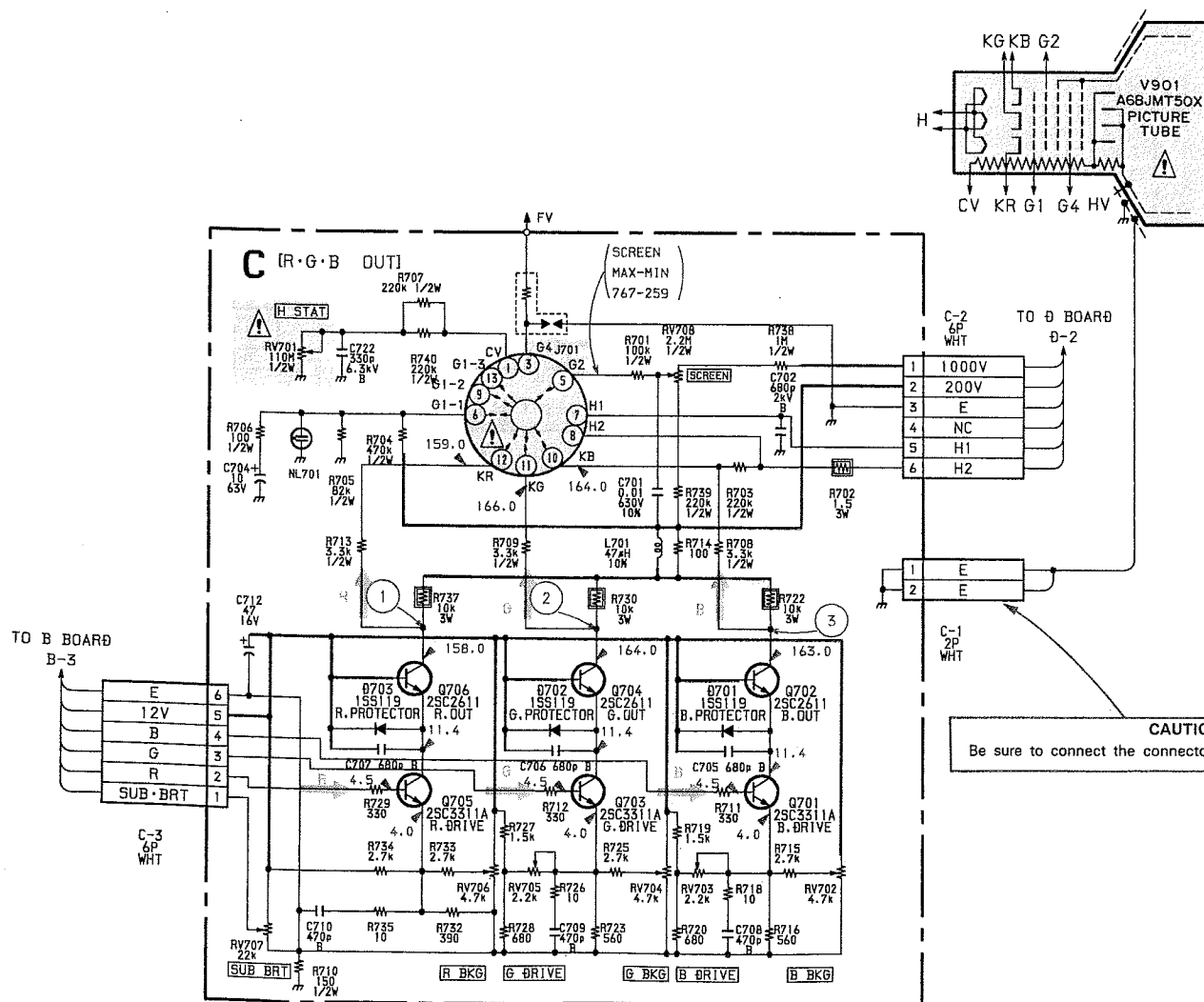
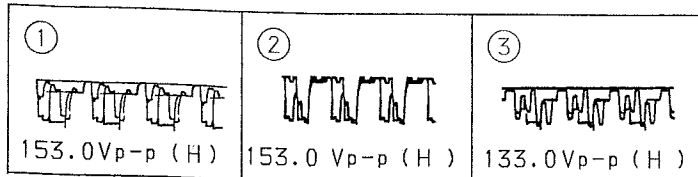
IC		DIODE		0619 0620 0621 0622
IC101	B-3	0101	0-10	VARI RESI RV101
IC102	C-3	0103	A-2	
IC103	C-1	0104	C-3	
IC104	B-6	0105	C-3	
IC105	C-8	0107	0-1	
IC352	B-12	0108	0-1	
IC354	A-12	0109	A-4	
IC355	A-11	0110	A-5	
IC431	B-7	0111	A-5	
IC501	0-8	0112	C-5	
IC601	E-3	0113	C-3	
IC602	F-2	0114	C-3	
IC605	E-2	0115	A-2	
IC606	F-2	0116	B-2	
IC607	F-5	0117	A-8	
		0118	B-5	
		0119	B-5	
		0120	A-4	
		0121	B-3	
		0431	A-8	
TRANSISTOR		0432	A-4	
Q101	B-5	0433	B-8	
Q103	A-2	0504	G-10	
Q104	A-3	0505	F-10	
Q105	A-4	0506	G-9	
Q106	A-3	0507	0-11	
Q107	A-9	0508	0-11	
Q108	A-8	0509	0-11	
Q109	C-5	0510	E-10	
Q122	C-7	0511	F-10	
Q344	A-9	0512	E-8	
Q345	A-10	0513	C-5	
Q346	A-10	0514	0-5	
Q434	B-9	0515	B-9	
Q435	B-10	0516	B-5	
Q436	B-9	0517	B-5	
Q437	B-9	0601	G-4	
Q438	A-9	0602	G-2	
Q439	B-9	0603	G-5	
Q501	0-7	0604	G-5	
Q502	0-10	0605	G-6	
Q503	F-6	0606	G-6	
Q601	0-4	0607	E-4	
Q602	0-6	0608	E-4	
Q603	E-3	0609	0-3	
Q604	E-6	0610	0-3	
Q605	0-6	0611	E-6	
Q606	0-6	0612	E-4	
Q610	0-4	0613	0-4	
Q613	F-6	0614	E-5	
Q614	F-6	0615	E-5	
		0617	E-5	
		0618	F-5	

TRANSISTOR

Q101	B-5	Q432	A-4
Q103	A-2	Q433	B-8
Q104	A-3	Q504	G-10
Q105	A-4	Q505	F-10
Q106	A-3	Q506	G-9
Q107	A-9	Q507	0-11
Q108	A-8	Q508	0-11
Q109	C-5	Q509	0-11
Q122	C-7	Q510	E-10
Q344	A-9	Q511	F-10
Q345	A-10	Q512	E-8
Q346	A-10	Q513	C-5
Q434	B-9	Q514	0-5
Q435	B-10	Q515	B-9
Q436	B-9	Q516	B-5
Q437	B-9	Q517	B-5
Q438	A-9	Q601	G-4
Q439	B-9	Q602	G-2
Q501	0-7	Q603	G-5
Q502	0-10	Q604	G-5
Q503	F-6	Q605	G-6
Q601	0-4	Q606	G-6
Q602	0-6	Q607	E-4
Q603	E-3	Q608	E-4
Q604	E-6	Q609	0-3
Q605	0-6	Q610	0-3
Q606	0-6	Q611	E-6
Q610	0-4	Q612	E-4
Q613	F-6	Q613	0-4
Q614	F-6	Q614	E-5
		Q615	E-5
		Q617	E-5
		Q618	E-5



— C Board —



SECTION 7

EXPLODED VIEWS

NOTE:

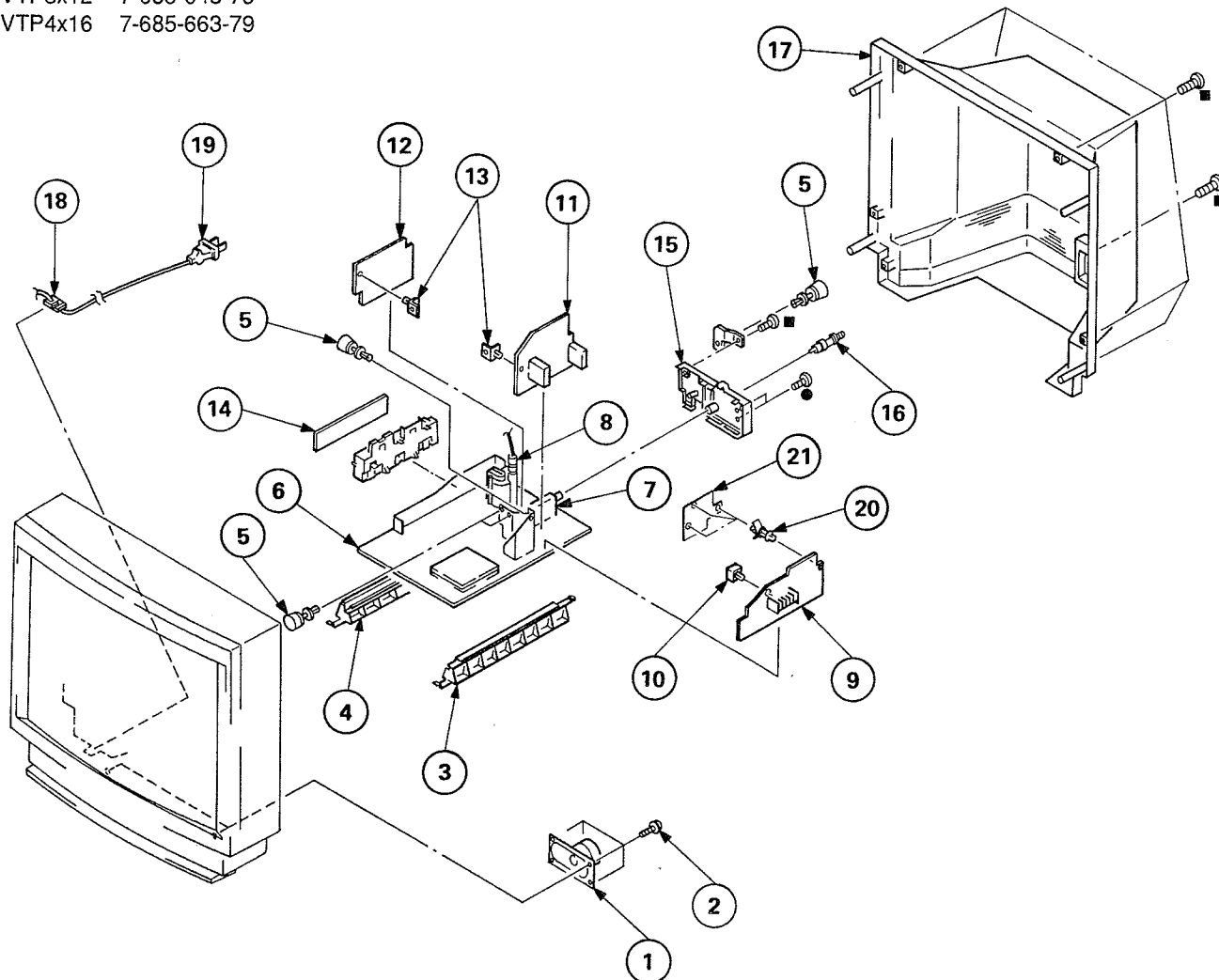
- Items with no part number and no description are not stocked because they are seldom required for routine service.
- The construction parts of an assembled part are indicated with a collation number in the remark column.
- Items marked "*" are not stocked since they are seldom required for routine service. Some delay should be anticipated when ordering these items.

The components identified by shading and mark Δ are critical for safety.
Replace only with part number specified.

Les composants identifiés par une trame et une marque Δ sont critiques pour la sécurité.
Ne les remplacer que par une pièce portant le numéro spécifié.

7-1. CHASSIS

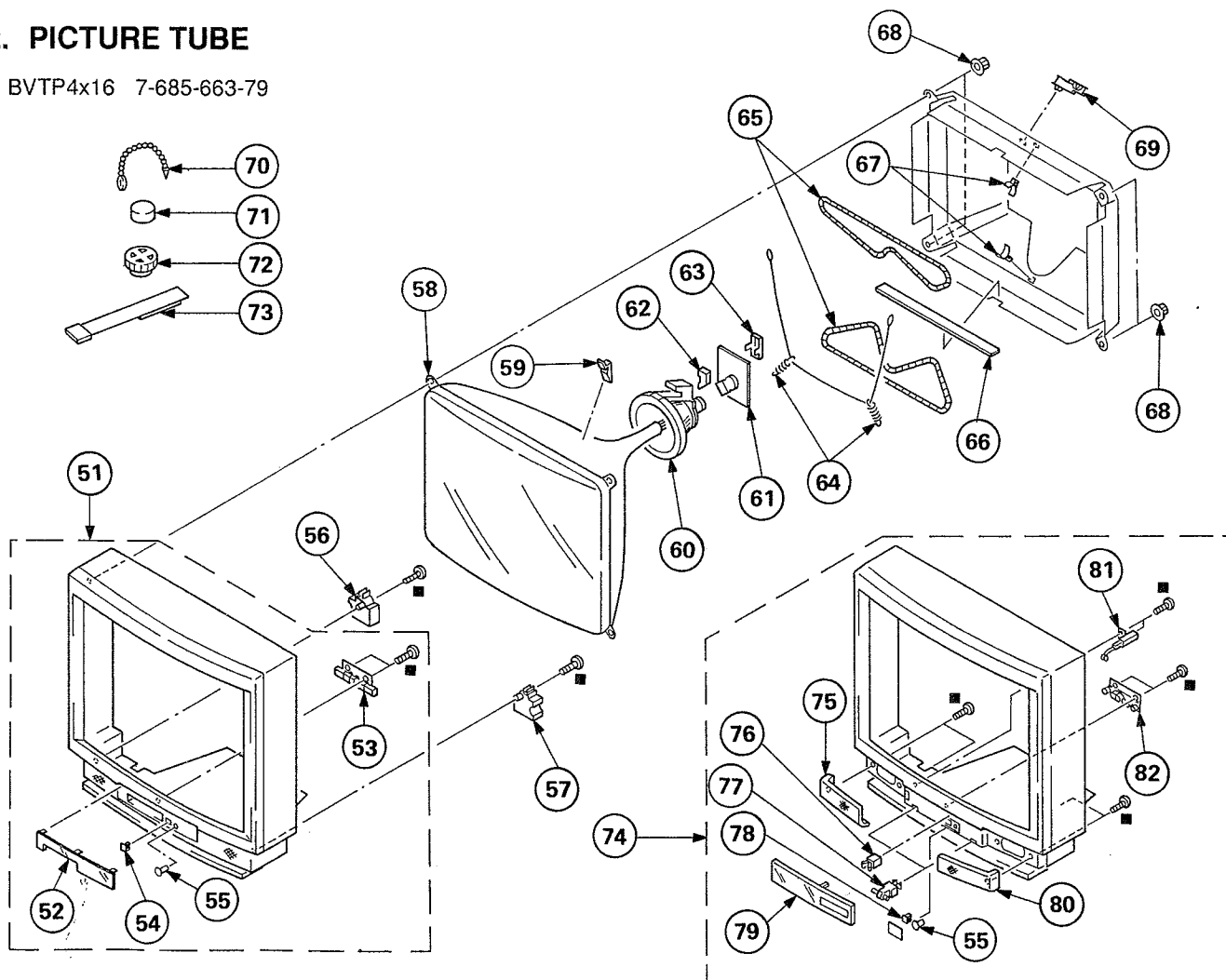
- : BVTP3x12 7-685-648-79
- : BVTP4x16 7-685-663-79



REF.NO.	PART NO.	DESCRIPTION	REMARK	REF.NO.	PART NO.	DESCRIPTION	REMARK
1	1-544-549-11	SPEAKER		11	A-1296-831-A	A BOARD, COMPLETE (KV-27TS31(U/C) ONLY)	
2	4-388-477-01	SCREW (3X16), TAPPING, +BV WASHER			A-1296-848-A	A BOARD, COMPLETE (KV-27TS27(U/C) ONLY)	
3	*4-031-417-01	GUIDE (RIGHT), PC BOARD		12	A-1345-953-A	E BOARD, COMPLETE	
4	*4-031-418-01	GUIDE (LEFT), PC BOARD		13	*4-397-417-01	HOLDER, PC BOARD	
5	*4-397-418-01	RIVET, T TYPE		14	*1-638-095-11	F BOARD	
6	*A-1345-952-A	D BOARD, COMPLETE (KV-27TS31(U) ONLY)		15	X-4029-750-1	TERMINAL BOARD ASSY, ANTENNA	(KV-27TS27(U/C) ONLY)
	*A-1345-963-A	D BOARD, COMPLETE (KV-27TS27(U) ONLY)			X-4029-754-1	TERMINAL BOARD ASSY, ANTENNA	(KV-27TS31(U/C) ONLY)
	*A-1345-989-A	D BOARD, COMPLETE (KV-27TS27(C) ONLY)					
	*A-1345-990-A	D BOARD, COMPLETE (KV-27TS31(C) ONLY)					
7	Δ 1-465-371-11	TUNER, ET (BTP-RA401)		16	1-573-657-11	PLUG, F-PIN	
		(KV-27TS27(U), KV-27TS31(U) ONLY)		17	4-031-608-01	COVER, REAR	
	Δ 1-465-371-21	TUNER, ET (BTP-RA401)		18	Δ 4-388-328-01	GROMMET, AC CORD	
		(KV-27TS27(C), KV-27TS31(C) ONLY)		19	Δ 1-590-492-21	CORD, POWER (WITH CONNECTOR)	
8	Δ 1-439-502-11	TRANSFORMER ASSY, FLYBACK (NX-2600A3)		20	*3-703-353-03	SUPPORT, PC BOARD	
9	A-1135-670-A	B BOARD, COMPLETE		21	4-033-125-01	PLATE, SHIELD	
10	*4-032-236-01	HOLDER (B), PC BOARD					

7-2. PICTURE TUBE

■ : BVTP4x16 7-685-663-79



The components identified by shading and mark ▲ are critical for safety.
Replace only with part number specified.

Les composants identifiés par une trame et une marque ▲ sont critiques pour la sécurité.
Ne les remplacer que par une pièce portant le numéro spécifié.

REF.NO.	PART NO.	DESCRIPTION	REMARK	REF.NO.	PART NO.	DESCRIPTION	REMARK
51	X-4029-752-1	CABINET ASSY (WITH BEZEL ASSY)	52-55	68	4-387-204-01	NUT, SPECIAL, PICTURE TUBE	
52	X-4029-751-1	PANEL ASSY, CONTROL (KV-27TS27(U/C) ONLY)		69	*4-387-284-01	HOLDER, LEAD	
53	X-4029-806-1	BUTTON ASSY, MULTI (KV-27TS27(U/C) ONLY)		70	4-308-870-00	CLIP, LEAD WIRE	
54	*4-031-413-01	GUIDE, LIGHT (KV-27TS27(U/C) ONLY)		71	1-452-032-00	MAGNET, DISK; 10MM φ	
55	*4-389-517-01	GUIDE (R), LIGHT		72	1-452-094-00	MAGNET, ROTATABLE DISK; 15MM φ	
56	*4-031-603-01	SUPPORT (LEFT), PICTURE TUBE		73	X-4306-312-0	PERMALLOY ASSY, CONVERGENCE	
57	*4-031-604-01	SUPPORT (RIGHT), PICTURE TUBE		74	X-4029-760-1	CABINET ASSY (WITH BEZEL ASSY) (KV-27TS31(U/C) ONLY)	55,75-82
58	▲ 8-737-753-05	PICTURE TUBE (A68JMT50X)		75	X-4029-757-1	FRAME ASSY (LEFT), SPEAKER (KV-27TS31(U/C) ONLY)	
59	3-704-495-01	SPACER, DY		76	4-392-036-01	CATCHER, PUSH (KV-27TS31(U/C) ONLY)	
60	▲ 1-451-275-31	DEFLECTION YOKE (Y28PFA)		77	3-703-035-11	SHAFT, LID (KV-27TS31(U/C) ONLY)	
61	*A-1331-128-A	C BOARD, COMPLETE		78	*4-032-397-01	GUIDE, LIGHT (KV-27TS31(U/C) ONLY)	
62	*4-379-167-01	COVER (MAIN), CV		79	X-4029-759-1	DOOR ASSY, CONTROL (KV-27TS31(U/C) ONLY)	
63	*4-379-160-01	COVER (REAR LID), CV		80	X-4029-758-1	FRAME ASSY (RIGHT), SPEAKER (KV-27TS31(U/C) ONLY)	
64	4-369-318-00	SPRING, TENSION		81	*4-032-393-01	DAMPER (KV-27TS31(U/C) ONLY)	
65	▲ 1-426-350-11	COIL, DEMAGNETIZATION		82	X-4029-805-1	BUTTON ASSY, MULTI (KV-27TS31(U/C) ONLY)	
66	4-385-725-01	SHEET, BLOTING					
67	*4-371-629-01	STOPPER, WIRE					

SECTION 8

ELECTRICAL PARTS LIST

B

NOTE:

The components identified by shading and mark Δ are critical for safety.
Replace only with part number specified.

Les composants identifiés par une trame et une marque Δ sont critiques pour la sécurité.
Ne les remplacer que par une pièce portant le numéro spécifié.

- Items marked "*" are not stocked since they are seldom required for routine service. Some delay should be anticipated when ordering these items.

- All variable and adjustable resistors have characteristic curve B, unless otherwise noted.

RESISTORS

- All resistors are in ohms
- F: nonflammable

When indicating parts by reference number, please include the board name.

CAPACITORS

- MF: μ F, PF: μ F

COILS

- MMH: mH, UH: μ H

- The components identified by Δ in this manual have been carefully factory-selected for each set in order to satisfy regulations regarding X-ray radiation.
Should replacement be required, replace only with the value originally used.

REF.NO.	PART NO.	DESCRIPTION	REMARK	REF.NO.	PART NO.	DESCRIPTION	REMARK
	A-1135-670-A	B BOARD, COMPLETE *****		C1409	1-124-925-11	ELECT 2.2MF 20% 50V	
	*4-341-752-01	EYELET (EY1-EY3)		C1410	1-124-120-11	ELECT 220MF 20% 25V	
	4-382-854-11	SCREW (M3X10), P, SW (+)		C1411	1-126-233-11	ELECT 22MF 20% 25V	
		<CONNECTOR>		C1412	1-124-120-11	ELECT 220MF 20% 25V	
B1	*1-560-123-00	PLUG, CONNECTOR (2.5MM) 3P		C1413	1-136-173-00	FILM 0.47MF 5% 50V	
B2	*1-564-506-11	PLUG, CONNECTOR 3P		C1414	1-124-907-11	ELECT 10MF 20% 50V	
B3	*1-564-509-11	PLUG, CONNECTOR 6P		C1415	1-136-169-00	FILM 0.22MF 5% 50V	
B4	*1-564-506-11	PLUG, CONNECTOR 3P		C1416	1-124-563-11	ELECT 2200MF 20% 25V	
B6	*1-564-508-11	PLUG, CONNECTOR 5P		C1417	1-136-169-00	FILM 0.22MF 5% 50V	
B7	1-573-300-11	CONNECTOR, BOARD TO BOARD 18P		C1418	1-124-563-11	ELECT 2200MF 20% 25V	
B10	1-573-300-11	CONNECTOR, BOARD TO BOARD 18P		C1419	1-124-563-11	ELECT 2200MF 20% 25V	
		<CAPACITOR>				<DIODE>	
C301	1-124-282-00	ELECT 22MF 20% 16V		D301	8-719-158-39	DIODE RD10S-B	
C302	1-163-009-11	CERAMIC CHIP 0.001MF 10% 50V		D302	8-719-158-39	DIODE RD10S-B	
C303	1-126-233-11	ELECT 22MF 20% 25V		D303	8-719-158-39	DIODE RD10S-B	
C306	1-163-105-00	CERAMIC CHIP 33PF 5% 50V		D304	8-719-404-46	DIODE MA110	
C307	1-163-133-00	CERAMIC CHIP 470PF 5% 50V		D305	8-719-404-46	DIODE MA110	
C308	1-124-903-11	ELECT 1MF 20% 50V		D306	8-719-109-81	DIODE RD4.7ES-B2	
C310	1-163-038-00	CERAMIC CHIP 0.1MF 25V		D307	8-719-158-39	DIODE RD10S-B	
C312	1-163-038-00	CERAMIC CHIP 0.1MF 25V		D308	8-719-158-39	DIODE RD10S-B	
C313	1-124-925-11	ELECT 2.2MF 20% 50V		D309	8-719-158-39	DIODE RD10S-B	
C314	1-126-233-11	ELECT 22MF 20% 25V		D310	8-719-158-39	DIODE RD10S-B	
C315	1-124-907-11	ELECT 10MF 20% 50V				<DELAY LINE>	
C316	1-164-232-11	CERAMIC CHIP 0.01MF 10% 50V		DL301	1-415-851-11	DELAY LINE	
C317	1-163-097-00	CERAMIC CHIP 15PF 5% 50V				<FILTER>	
C318	1-164-222-11	CERAMIC CHIP 0.22MF 25V		FL301	1-239-151-11	FILTER, HIGH PASS	
C319	1-163-018-00	CERAMIC CHIP 0.0056MF 10% 50V				<IC>	
C320	1-126-101-11	ELECT 100MF 20% 16V		IC301	8-759-518-39	IC TDA3569B/N2	
C321	1-124-907-11	ELECT 10MF 20% 50V		IC302	8-752-012-52	IC CX20125	
C322	1-124-903-11	ELECT 1MF 20% 50V		IC1400	8-759-980-43	IC TDA2009A	
C323	1-124-477-11	ELECT 47MF 20% 16V				<COIL>	
C324	1-124-907-11	ELECT 10MF 20% 50V		L304	1-408-405-00	INDUCTOR 4.7UH	
C325	1-124-907-11	ELECT 10MF 20% 50V				<TRANSISTOR>	
C326	1-124-927-11	ELECT 4.7MF 20% 50V		Q301	8-729-920-74	TRANSISTOR 2SC2412K-QR	
C329	1-124-927-11	ELECT 4.7MF 20% 50V		Q302	8-729-216-22	TRANSISTOR 2SA1162-G	
C330	1-126-233-11	ELECT 22MF 20% 25V		Q303	8-729-119-78	TRANSISTOR 2SC2785-HFE	
C331	1-164-222-11	CERAMIC CHIP 0.22MF 25V		Q304	8-729-920-74	TRANSISTOR 2SC2412K-QR	
C332	1-163-035-00	CERAMIC CHIP 0.047MF 50V		Q305	8-729-920-74	TRANSISTOR 2SC2412K-QR	
C333	1-126-233-11	ELECT 22MF 20% 25V		Q306	8-729-216-22	TRANSISTOR 2SA1162-G	
C1402	1-124-903-11	ELECT 1MF 20% 50V					
C1403	1-124-907-11	ELECT 10MF 20% 50V					
C1404	1-124-903-11	ELECT 1MF 20% 50V					
C1405	1-124-925-11	ELECT 2.2MF 20% 50V					
C1406	1-136-153-00	FILM 0.01MF 5% 50V					
C1407	1-136-153-00	FILM 0.01MF 5% 50V					
C1408	1-124-925-11	ELECT 2.2MF 20% 50V					

B

REF. NO.	PART NO.	DESCRIPTION	REMARK	REF. NO.	PART NO.	DESCRIPTION	REMARK
Q307	8-729-920-74	TRANSISTOR 2SC2412K-QR		R352	1-216-057-00	METAL GLAZE 2.2K 5%	1/10W
Q308	8-729-119-78	TRANSISTOR 2SC2785-HFE		R353	1-216-037-00	METAL GLAZE 330 5%	1/10W
Q309	8-729-920-74	TRANSISTOR 2SC2412K-QR					
Q310	8-729-920-74	TRANSISTOR 2SC2412K-QR		R354	1-216-075-00	METAL GLAZE 12K 5%	1/10W
Q311	8-729-920-74	TRANSISTOR 2SC2412K-QR		R355	1-216-075-00	METAL GLAZE 12K 5%	1/10W
				R356	1-216-025-00	METAL GLAZE 100 5%	1/10W
Q312	8-729-920-74	TRANSISTOR 2SC2412K-QR		R357	1-216-069-00	METAL GLAZE 6.8K 5%	1/10W
Q313	8-729-920-74	TRANSISTOR 2SC2412K-QR		R358	1-216-051-00	METAL GLAZE 1.2K 5%	1/10W
Q314	8-729-216-22	TRANSISTOR 2SA1162-G					
Q330	8-729-920-74	TRANSISTOR 2SC2412K-QR		R359	1-216-109-00	METAL GLAZE 330K 5%	1/10W
Q1400	8-729-920-74	TRANSISTOR 2SC2412K-QR		R360	1-216-065-00	METAL GLAZE 4.7K 5%	1/10W
				R361	1-216-057-00	METAL GLAZE 2.2K 5%	1/10W
Q1401	8-729-920-74	TRANSISTOR 2SC2412K-QR		R362	1-216-083-00	METAL GLAZE 27K 5%	1/10W
Q1402	8-729-920-74	TRANSISTOR 2SC2412K-QR		R363	1-216-117-00	METAL GLAZE 680K 5%	1/10W
Q1403	8-729-216-22	TRANSISTOR 2SA1162-G					
<RESISTOR>				R364	1-216-025-00	METAL GLAZE 100 5%	1/10W
R301	1-216-091-00	METAL GLAZE 56K 5%	1/10W	R377	1-247-688-11	CARBON 10 5%	1/4W F
R302	1-216-075-00	METAL GLAZE 12K 5%	1/10W	R380	1-216-041-00	METAL GLAZE 470 5%	1/10W
R303	1-216-065-00	METAL GLAZE 4.7K 5%	1/10W	R381	1-216-033-00	METAL GLAZE 220 5%	1/10W
R304	1-216-073-00	METAL GLAZE 10K 5%	1/10W	R382	1-216-033-00	METAL GLAZE 220 5%	1/10W
R305	1-216-041-00	METAL GLAZE 470 5%	1/10W				
				R383	1-216-033-00	METAL GLAZE 220 5%	1/10W
R306	1-216-107-00	METAL GLAZE 270K 5%	1/10W	R384	1-216-033-00	METAL GLAZE 220 5%	1/10W
R307	1-216-121-00	METAL GLAZE 1M 5%	1/10W	R385	1-216-033-00	METAL GLAZE 220 5%	1/10W
R308	1-216-071-00	METAL GLAZE 8.2K 5%	1/10W	R386	1-247-903-00	CARBON 1M 5%	1/4W
R309	1-216-073-00	METAL GLAZE 10K 5%	1/10W	R1401	1-216-025-00	METAL GLAZE 100 5%	1/10W
R310	1-216-095-00	METAL GLAZE 82K 5%	1/10W				
				R1403	1-216-057-00	METAL GLAZE 2.2K 5%	1/10W
R311	1-216-097-00	METAL GLAZE 100K 5%	1/10W	R1405	1-216-057-00	METAL GLAZE 2.2K 5%	1/10W
R312	1-216-089-00	METAL GLAZE 47K 5%	1/10W	R1406	1-216-025-00	METAL GLAZE 100 5%	1/10W
R313	1-216-049-00	METAL GLAZE 1K 5%	1/10W	R1409	1-216-077-00	METAL GLAZE 15K 5%	1/10W
R314	1-216-295-00	METAL GLAZE 0 5%	1/10W	R1410	1-216-063-00	METAL GLAZE 3.9K 5%	1/10W
R315	1-216-295-00	METAL GLAZE 0 5%	1/10W				
				R1411	1-216-077-00	METAL GLAZE 15K 5%	1/10W
R316	1-216-033-00	METAL GLAZE 220 5%	1/10W	R1412	1-216-071-00	METAL GLAZE 8.2K 5%	1/10W
R318	1-216-089-00	METAL GLAZE 47K 5%	1/10W	R1413	1-216-067-00	METAL GLAZE 5.6K 5%	1/10W
R319	1-216-033-00	METAL GLAZE 220 5%	1/10W	R1414	1-216-067-00	METAL GLAZE 5.6K 5%	1/10W
R320	1-216-033-00	METAL GLAZE 220 5%	1/10W	R1415	1-216-065-00	METAL GLAZE 4.7K 5%	1/10W
R321	1-216-073-00	METAL GLAZE 10K 5%	1/10W				
				R1416	1-216-089-00	METAL GLAZE 47K 5%	1/10W
R322	1-216-033-00	METAL GLAZE 220 5%	1/10W	R1417	1-216-085-00	METAL GLAZE 33K 5%	1/10W
R323	1-216-033-00	METAL GLAZE 220 5%	1/10W	R1418	1-216-097-00	METAL GLAZE 100K 5%	1/10W
R324	1-216-033-00	METAL GLAZE 220 5%	1/10W	R1419	1-216-041-00	METAL GLAZE 470 5%	1/10W
R325	1-216-033-00	METAL GLAZE 220 5%	1/10W	R1420	1-216-075-00	METAL GLAZE 12K 5%	1/10W
R326	1-216-033-00	METAL GLAZE 220 5%	1/10W				
				R1421	1-216-075-00	METAL GLAZE 12K 5%	1/10W
R327	1-216-065-00	METAL GLAZE 4.7K 5%	1/10W	R1422	1-216-011-00	METAL GLAZE 27 5%	1/10W
R329	1-216-295-00	METAL GLAZE 0 5%	1/10W	R1423	1-216-051-00	METAL GLAZE 1.2K 5%	1/10W
R330	1-216-037-00	METAL GLAZE 330 5%	1/10W	R1424	1-216-051-00	METAL GLAZE 1.2K 5%	1/10W
R331	1-216-065-00	METAL GLAZE 4.7K 5%	1/10W	R1425	1-216-011-00	METAL GLAZE 27 5%	1/10W
R332	1-216-089-00	METAL GLAZE 47K 5%	1/10W				
				R1426	1-216-298-00	METAL GLAZE 2.2 5%	1/10W
R333	1-216-089-00	METAL GLAZE 47K 5%	1/10W	R1427	1-216-298-00	METAL GLAZE 2.2 5%	1/10W
R334	1-216-033-00	METAL GLAZE 220 5%	1/10W	R1428	1-216-057-00	METAL GLAZE 2.2K 5%	1/10W
R335	1-216-045-00	METAL GLAZE 680 5%	1/10W	R1429	1-216-057-00	METAL GLAZE 2.2K 5%	1/10W
R336	1-216-065-00	METAL GLAZE 4.7K 5%	1/10W				
R337	1-216-049-00	METAL GLAZE 1K 5%	1/10W	<VARIABLE RESISTOR>			
				RV301	1-238-011-11	RES, ADJ, CARBON 470	
R338	1-216-049-00	METAL GLAZE 1K 5%	1/10W	RV302	1-238-017-11	RES, ADJ, CARBON 22K	
R339	1-216-065-00	METAL GLAZE 4.7K 5%	1/10W	RV303	1-238-016-11	RES, ADJ, CARBON 10K	
R340	1-216-097-00	METAL GLAZE 100K 5%	1/10W	RV1400	1-238-016-11	RES, ADJ, CARBON 10K	
R342	1-216-069-00	METAL GLAZE 6.8K 5%	1/10W				
R343	1-216-049-00	METAL GLAZE 1K 5%	1/10W	<SWITCH>			
				S751	1-554-186-00	SWITCH, LEVER	
R344	1-216-025-00	METAL GLAZE 100 5%	1/10W				
R345	1-216-075-00	METAL GLAZE 12K 5%	1/10W	<CRYSTAL>			
R346	1-216-049-00	METAL GLAZE 1K 5%	1/10W	X301	1-567-505-11	OSCILLATOR, CRYSTAL	
R347	1-216-057-00	METAL GLAZE 2.2K 5%	1/10W				
R348	1-216-057-00	METAL GLAZE 2.2K 5%	1/10W	*****			
R349	1-216-053-00	METAL GLAZE 1.5K 5%	1/10W				
R350	1-216-075-00	METAL GLAZE 12K 5%	1/10W				
R351	1-216-057-00	METAL GLAZE 2.2K 5%	1/10W				

The components identified by shading and mark Δ are critical for safety. Replace only with part number specified.

Les composants identifiés par une trame et une marque Δ sont critiques pour la sécurité. Ne les remplacer que par une pièce portant le numéro spécifié.

KV-27TS27/27TS31
RM-791 RM-Y101

F A

REF.NO.	PART NO.	DESCRIPTION	REMARK	REF.NO.	PART NO.	DESCRIPTION	REMARK
*1-638-095-11	F BOARD	*****		A1	*1-564-508-11	PLUG, CONNECTOR 5P (KV-27TS31(U/C) ONLY)	
1-533-223-11	CLIP, FUSE			A3	1-573-301-11	CONNECTOR, BOARD TO BOARD 20P	
*4-341-751-01	EYELET (EY3-EY12)			A4	1-573-301-11	CONNECTOR, BOARD TO BOARD 20P	
*4-341-752-01	EYELET (EY1,EY2,EY13)			A12	*1-508-784-00	PIN, CONNECTOR (5MM PITCH) 1P	
<CAPACITOR>				<CAPACITOR>			
C680	1-136-311-51	FILM	0.47MF 20% 125V	C201	1-130-487-00	MYLAR	0.022MF 5% 50V
C681	1-161-741-51	CERAMIC	0.001MF 10% 400V	C202	1-130-471-00	MYLAR	0.001MF 5% 50V
C682	1-136-311-51	FILM	0.47MF 20% 125V	C203	1-126-233-11	ELECT	22MF 20% 50V
C685	1-161-754-00	CERAMIC	0.001MF 10% 3KV	C204	1-163-117-00	CERAMIC CHIP	100PF 5% 50V
<DIODE>				C206	1-124-477-11	ELECT	47MF 20% 16V
D680	8-719-911-55	DIODE U05G		C207	1-136-163-00	FILM	0.068MF 5% 50V
D1580	8-719-911-55	DIODE U05G		C208	1-136-015-00	CERAMIC CHIP	0.0033MF 5% 50V
D1581	8-719-911-55	DIODE U05G		C209	1-136-165-00	FILM	0.1MF 5% 50V
<CONNECTOR>				C210	1-164-161-11	CERAMIC CHIP	0.0022MF 10% 50V
F1	*1-580-843-11	PIN, CONNECTOR (POWER)		C211	1-164-161-11	CERAMIC CHIP	0.0022MF 10% 50V
F3	*1-508-765-00	PIN, CONNECTOR (5MM PITCH) 3P		C212	1-124-477-11	ELECT	47MF 20% 16V
F4	*1-508-786-00	PIN, CONNECTOR (5MM PITCH) 2P		C213	1-136-161-00	FILM	0.047MF 5% 50V
F5	*1-559-991-21	CONNECTOR ASSY 1P		C214	1-106-351-00	MYLAR	0.0022MF 10% 100V
F7	*1-508-767-00	PIN, CONNECTOR (5MM PITCH) 5P		C215	1-163-121-00	CERAMIC CHIP	150PF 5% 50V
F8	*1-564-506-11	PLUG, CONNECTOR 3P		C216	1-126-233-11	ELECT	22MF 20% 25V
F9	*1-508-766-00	PIN, CONNECTOR (5MM PITCH) 4P		C217	1-126-233-11	ELECT	22MF 20% 25V
F18	*1-564-507-11	PLUG, CONNECTOR 4P		C218	1-124-903-11	ELECT	1MF 20% 50V
<FUSE>				C220	1-163-017-00	CERAMIC CHIP	0.0047MF 10% 50V
F601	1-532-748-11	FUSE, GLASS TUBE 6.3A/125V		C222	1-126-233-11	ELECT	22MF 20% 25V
<RESISTOR>				C224	1-163-017-00	CERAMIC CHIP	0.0047MF 10% 50V
R680	1-202-723-91	SOLID	2.2M 10% 1/2W	C225	1-124-903-11	ELECT	1MF 20% 50V
R681	1-202-723-91	SOLID	2.2M 10% 1/2W	C226	1-126-101-11	ELECT	100MF 20% 16V
R683	1-202-525-00	SOLID	10 10% 1/2W	C233	1-164-232-11	CERAMIC CHIP	0.01MF 10% 50V
R1580	1-215-884-11	METAL OXIDE	47 5% 2W F	C234	1-124-477-11	ELECT	47MF 20% 16V
R1581	1-215-884-11	METAL OXIDE	47 5% 2W F	C235	1-130-729-00	FILM	0.0027MF 5% 50V
R1584	1-215-880-00	METAL OXIDE	10 5% 2W F	C237	1-124-907-11	ELECT	10MF 20% 50V
<RELAY>				C241	1-136-153-00	FILM	0.01MF 5% 50V
RY680	1-515-684-22	RELAY		C242	1-136-153-00	FILM	0.01MF 5% 50V
<TRANSFORMER>				C243	1-163-035-00	CERAMIC CHIP	0.047MF 50V
T680	1-424-220-21	TRANSFORMER, LINE FILTER		C251	1-130-487-00	MYLAR	0.022MF 5% 50V
T681	1-424-546-11	TRANSFORMER, LINE FILTER		C254	1-124-907-11	ELECT	10MF 20% 50V
<THERMISTOR>				C274	1-124-477-11	ELECT	47MF 20% 25V
THP601	1-808-081-14	THERMISTOR, POSITIVE		C275	1-164-005-11	CERAMIC CHIP	0.47MF 25V
*****				C278	1-101-006-00	CERAMIC	0.047MF 50V
A-1296-831-A	A BOARD, COMPLETE (KV-27TS31(U/C) ONLY)			C287	1-101-006-00	CERAMIC	0.047MF 50V
A-1296-848-A	A BOARD, COMPLETE (KV-27TS27(U/C) ONLY)			C288	1-101-006-00	CERAMIC	0.047MF 50V
*****				C401	1-126-233-11	ELECT	22MF 20% 25V
<CONNECTOR>				C402	1-124-903-11	ELECT	1MF 20% 50V
				C403	1-124-903-11	ELECT	1MF 20% 50V
				C404	1-124-903-11	ELECT	1MF 20% 50V
				C405	1-124-903-11	ELECT	1MF (KV-27TS31(U/C) ONLY) 20% 50V
				C406	1-126-233-11	ELECT	22MF (KV-27TS31(U/C) ONLY) 20% 25V
				C407	1-126-233-11	ELECT	22MF (KV-27TS31(U/C) ONLY) 20% 25V
				C408	1-163-035-00	CERAMIC CHIP	0.047MF 50V
				C409	1-163-035-00	CERAMIC CHIP	0.047MF 50V
				C410	1-126-233-11	ELECT	22MF 20% 25V
				C411	1-163-035-00	CERAMIC CHIP	0.047MF 50V
				C412	1-164-232-11	CERAMIC CHIP	0.01MF 10% 50V
				C413	1-164-232-11	CERAMIC CHIP	0.01MF 10% 50V

A

REF. NO.	PART NO.	DESCRIPTION	REMARK	REF. NO.	PART NO.	DESCRIPTION	REMARK
<DIODE>				R202	1-216-049-00	METAL GLAZE 1K 5%	1/10W
D401	8-719-158-39	DIODE RD10S-B		R204	1-216-105-00	METAL GLAZE 220K 5%	1/10W
D402	8-719-158-39	DIODE RD10S-B		R206	1-216-091-00	METAL GLAZE 56K 5%	1/10W
D403	8-719-158-39	DIODE RD10S-B		R207	1-216-121-00	METAL GLAZE 1M 5%	1/10W
D404	8-719-158-39	DIODE RD10S-B (KV-27TS31(U/C) ONLY)		R208	1-216-091-00	METAL GLAZE 56K 5%	1/10W
D405	8-719-158-39	DIODE RD10S-B (KV-27TS31(U/C) ONLY)		R209	1-216-049-00	METAL GLAZE 1K 5%	1/10W
D406	8-719-158-39	DIODE RD10S-B (KV-27TS31(U/C) ONLY)		R210	1-216-065-00	METAL GLAZE 4.7K 5%	1/10W
D407	8-719-158-39	DIODE RD10S-B (KV-27TS31(U/C) ONLY)		R211	1-216-089-00	METAL GLAZE 47K 5%	1/10W
D408	8-719-158-39	DIODE RD10S-B		R212	1-216-085-00	METAL GLAZE 33K 5%	1/10W
D409	8-719-158-39	DIODE RD10S-B		R213	1-216-061-00	METAL GLAZE 3.3K 5%	1/10W
D410	8-719-404-46	DIODE MA110		R219	1-216-073-00	METAL GLAZE 10K 5%	1/10W
D411	8-719-404-46	DIODE MA110		R220	1-216-061-00	METAL GLAZE 3.3K 5%	1/10W
<IC>				R222	1-216-089-00	METAL GLAZE 47K 5%	1/10W
IC201	8-759-510-90	IC TDA8302		R226	1-216-037-00	METAL GLAZE 330 5%	1/10W
IC202	8-759-982-25	IC RC78L09A		R227	1-216-089-00	METAL GLAZE 47K 5%	1/10W
IC203	8-759-982-37	IC RC78M93FD		R228	1-216-065-00	METAL GLAZE 4.7K 5%	1/10W
MM201	8-741-637-11	IC SBX1637-11		R229	1-216-067-00	METAL GLAZE 5.6K 5%	1/10W
<IF BLOCK>				R230	1-216-095-00	METAL GLAZE 82K 5%	1/10W
IF201	1-464-756-21	IF BLOCK (IFF-450A)		R231	1-216-295-00	METAL GLAZE 0 5%	1/10W
<JACK>				R232	1-216-055-00	METAL GLAZE 1.8K 5%	1/10W
J401	1-566-846-11	CONNECTOR, (S) TERMINAL 4P (KV-27TS31(U/C) ONLY)		R234	1-216-049-00	METAL GLAZE 1K 5%	1/10W
J402	1-573-656-11	JACK BLOCK, PIN 5P (KV-27TS27(U/C) ONLY)		R237	1-216-033-00	METAL GLAZE 220 5%	1/10W
	1-573-658-11	JACK BLOCK, PIN 7P (KV-27TS31(U/C) ONLY)		R238	1-216-049-00	METAL GLAZE 1K 5%	1/10W
<COIL>				R239	1-216-049-00	METAL GLAZE 1K 5%	1/10W
L201	1-410-792-31	INDUCTOR 0.82UH		R249	1-216-025-00	METAL GLAZE 100 5%	1/10W
<TRANSISTOR>				R250	1-216-065-00	METAL GLAZE 4.7K 5%	1/10W
Q201	8-729-920-74	TRANSISTOR 2SC2412K-QR		R251	1-216-065-00	METAL GLAZE 4.7K 5%	1/10W
Q203	8-729-920-74	TRANSISTOR 2SC2412K-QR		R252	1-216-065-00	METAL GLAZE 4.7K 5%	1/10W
Q205	8-729-920-74	TRANSISTOR 2SC2412K-QR		R253	1-216-025-00	METAL GLAZE 100 5%	1/10W
Q209	8-729-216-22	TRANSISTOR 2SA1162-G		R255	1-216-295-00	METAL GLAZE 0 5%	1/10W
Q210	8-729-920-74	TRANSISTOR 2SC2412K-QR		R256	1-216-083-00	METAL GLAZE 27K 5%	1/10W
Q401	8-729-920-74	TRANSISTOR 2SC2412K-QR		R257	1-216-099-00	METAL GLAZE 120K 5%	1/10W
Q402	8-729-920-74	TRANSISTOR 2SC2412K-QR		R258	1-216-025-00	METAL GLAZE 100 5%	1/10W
Q403	8-729-920-74	TRANSISTOR 2SC2412K-QR		R259	1-216-025-00	METAL GLAZE 100 5%	1/10W
Q404	8-729-920-74	TRANSISTOR 2SC2412K-QR		R260	1-216-055-00	METAL GLAZE 1.8K 5%	1/10W
Q405	8-729-920-74	TRANSISTOR 2SC2412K-QR		R261	1-216-073-00	METAL GLAZE 10K 5%	1/10W
<RESISTOR>				R263	1-216-025-00	METAL GLAZE 100 5%	1/10W
JR201	1-216-295-00	METAL GLAZE 0 5%	1/10W	R265	1-216-063-00	METAL GLAZE 3.9K 5%	1/10W
JR202	1-216-295-00	METAL GLAZE 0 5%	1/10W	R266	1-216-049-00	METAL GLAZE 1K 5%	1/10W
JR207	1-216-295-00	METAL GLAZE 0 5%	1/10W	R267	1-216-049-00	METAL GLAZE 1K 5%	1/10W
JR211	1-216-295-00	METAL GLAZE 0 5%	1/10W	R268	1-216-089-00	METAL GLAZE 47K 5%	1/10W
JR217	1-216-295-00	METAL GLAZE 0 5%	1/10W	R269	1-216-089-00	METAL GLAZE 47K 5%	1/10W
JR220	1-216-295-00	METAL GLAZE 0 5%	1/10W	R270	1-216-295-00	METAL GLAZE 0 5%	1/10W
JR221	1-216-295-00	METAL GLAZE 0 5%	1/10W	R271	1-216-067-00	METAL GLAZE 5.6K 5%	1/10W
JR222	1-216-295-00	METAL GLAZE 0 5%	1/10W	R272	1-216-047-00	METAL GLAZE 820 5%	1/10W
JR223	1-216-295-00	METAL GLAZE 0 5%	1/10W	R273	1-249-482-11	CARBON 4.7 5%	1/2W F
JR224	1-216-295-00	METAL GLAZE 0 5%	1/10W	R290	1-216-133-00	METAL GLAZE 3.3M 5%	1/10W
JR230	1-216-295-00	METAL GLAZE 0 5%	1/10W	R291	1-216-133-00	METAL GLAZE 3.3M 5%	1/10W
JR231	1-216-295-00	METAL GLAZE 0 5%	1/10W	R292	1-216-129-00	METAL GLAZE 2.2M 5%	1/10W
JR232	1-216-295-00	METAL GLAZE 0 5%	1/10W	R293	1-216-133-00	METAL GLAZE 3.3M 5%	1/10W
R200	1-216-051-00	METAL GLAZE 1.2K 5%	1/10W	R294	1-216-133-00	METAL GLAZE 3.3M 5%	1/10W
R201	1-216-085-00	METAL GLAZE 33K 5%	1/10W	R295	1-216-133-00	METAL GLAZE 3.3M 5%	1/10W
				R296	1-216-295-00	METAL GLAZE 0 5%	1/10W
				R401	1-216-023-00	METAL GLAZE 82 5%	1/10W
				R402	1-216-079-00	METAL GLAZE 18K 5%	1/10W
				R403	1-216-103-00	METAL GLAZE 180K 5%	1/10W
				R404	1-216-079-00	METAL GLAZE 18K 5%	1/10W
				R405	1-216-103-00	METAL GLAZE 180K 5%	1/10W
				R406	1-216-079-00	METAL GLAZE 18K 5%	1/10W
						(KV-27TS31(U/C) ONLY)	
				R407	1-216-103-00	METAL GLAZE 180K 5%	1/10W
						(KV-27TS31(U/C) ONLY)	
				R408	1-216-079-00	METAL GLAZE 18K 5%	1/10W
						(KV-27TS31(U/C) ONLY)	

The components identified by shading and mark Δ are critical for safety. Replace only with part number specified.

Les composants identifiés par une trame et une marque Δ sont critiques pour la sécurité. Ne les remplacer que par une pièce portant le numéro spécifié.

A	C
---	---

REF.NO.	PART NO.	DESCRIPTION	REMARK	REF.NO.	PART NO.	DESCRIPTION	REMARK
R409	1-216-103-00	METAL GLAZE 180K 5% 1/10W	(KV-27TS31(U/C) ONLY)	C722	1-162-622-11	CERAMIC 330PF 10% 6.3KV	
R410	1-216-023-00	METAL GLAZE 82 5% 1/10W	(KV-27TS31(U/C) ONLY)	<DIODE>			
R411	1-216-023-00	METAL GLAZE 82 5% 1/10W	(KV-27TS31(U/C) ONLY)	D701	8-719-911-19	DIODE 1SS119	
R412	1-216-049-00	METAL GLAZE 1K 5% 1/10W	(KV-27TS31(U/C) ONLY)	D702	8-719-911-19	DIODE 1SS119	
R413	1-216-097-00	METAL GLAZE 100K 5% 1/10W		D703	8-719-911-19	DIODE 1SS119	
R414	1-216-049-00	METAL GLAZE 1K 5% 1/10W		<JACK>			
R415	1-216-097-00	METAL GLAZE 100K 5% 1/10W		J701	Δ 1-540-071-13	SOCKET, PICTURE TUBE	
R416	1-216-049-00	METAL GLAZE 1K 5% 1/10W	(KV-27TS31(U/C) ONLY)	<COIL>			
R417	1-216-073-00	METAL GLAZE 10K 5% 1/10W		L701	1-408-417-00	INDUCTOR 47UH	
R418	1-216-059-00	METAL GLAZE 2.7K 5% 1/10W		<NEON LAMP>			
R419	1-216-033-00	METAL GLAZE 220 5% 1/10W		NL701	1-519-108-99	LAMP, NEON ASSY	
R420	1-216-051-00	METAL GLAZE 1.2K 5% 1/10W		<TRANSISTOR>			
R421	1-216-049-00	METAL GLAZE 1K 5% 1/10W	(KV-27TS31(U/C) ONLY)	Q701	8-729-423-37	TRANSISTOR 2SC3311A-QRS	
R422	1-216-049-00	METAL GLAZE 1K 5% 1/10W		Q702	8-729-326-11	TRANSISTOR 2SC2611	
R424	1-216-089-00	METAL GLAZE 47K 5% 1/10W		Q703	8-729-423-37	TRANSISTOR 2SC3311A-QRS	
R425	1-216-089-00	METAL GLAZE 47K 5% 1/10W		Q704	8-729-326-11	TRANSISTOR 2SC2611	
R426	1-216-089-00	METAL GLAZE 47K 5% 1/10W		Q705	8-729-423-37	TRANSISTOR 2SC3311A-QRS	
R427	1-216-089-00	METAL GLAZE 47K 5% 1/10W		Q706	8-729-326-11	TRANSISTOR 2SC2611	
R428	1-216-065-00	METAL GLAZE 4.7K 5% 1/10W		<RESISTOR>			
R429	1-216-073-00	METAL GLAZE 10K 5% 1/10W		R701	1-202-838-00	SOLID 100K 10% 1/2W	
R431	1-216-295-00	METAL GLAZE 0 5% 1/10W	(KV-27TS31(U/C) ONLY)	R702	1-216-391-11	METAL OXIDE 1.5 5% 3W	F
R460	1-216-049-00	METAL GLAZE 1K 5% 1/10W		R703	1-202-842-11	SOLID 220K 10% 1/2W	
R461	1-216-089-00	METAL GLAZE 47K 5% 1/10W		R704	1-202-846-00	SOLID 470K 10% 1/2W	
R462	1-216-089-00	METAL GLAZE 47K 5% 1/10W		R705	1-202-837-00	SOLID 82K 10% 1/2W	
R463	1-216-295-00	METAL GLAZE 0 5% 1/10W		R706	1-202-549-00	SOLID 100 10% 1/2W	
R464	1-216-049-00	METAL GLAZE 1K 5% 1/10W		R707	1-202-842-11	SOLID 220K 10% 1/2W	
<VARIABLE RESISTOR>				R708	1-202-824-00	SOLID 3.3K 10% 1/2W	
RV205	1-238-015-11	RES, ADJ, CARBON 4.7K		R709	1-202-824-00	SOLID 3.3K 10% 1/2W	
RV250	1-226-772-11	RES, ADJ, METAL GLAZE 4.7K		R710	1-202-553-31	SOLID 150 10% 1/2W	
*****				R711	1-249-411-11	CARBON 330 5% 1/4W	
*A-1331-128-A C BOARD, COMPLETE				R712	1-249-411-11	CARBON 330 5% 1/4W	
*****				R713	1-202-824-00	SOLID 3.3K 10% 1/2W	
*4-379-160-01 COVER (REAR LID), CV				R714	1-249-405-11	CARBON 100 5% 1/4W	
*4-379-167-01 COVER (MAIN), CV				R715	1-249-422-11	CARBON 2.7K 5% 1/4W	
<CONNECTOR>				R716	1-249-414-11	CARBON 560 5% 1/4W	
C1	*1-506-371-00	PIN, CONNECTOR 2P		R718	1-249-393-11	CARBON 10 5% 1/4W	
C2	*1-508-768-00	PIN, CONNECTOR (5MM PITCH) 6P		R719	1-249-419-11	CARBON 1.5K 5% 1/4W	
C3	*1-564-509-11	PLUG, CONNECTOR 6P		R720	1-249-415-11	CARBON 680 5% 1/4W	
<CAPACITOR>				R722	1-215-923-00	METAL OXIDE 10K 5% 3W	F
C701	1-136-601-11	FILM 0.01MF 10% 630V		R723	1-249-414-11	CARBON 560 5% 1/4W	
C702	1-162-116-00	CERAMIC 680PF 10% 2KV		R725	1-249-422-11	CARBON 2.7K 5% 1/4W	
C704	1-124-915-11	ELECT 10MF 20% 63V		R726	1-249-393-11	CARBON 10 5% 1/4W	
C705	1-164-083-11	CERAMIC 680PF 10% 50V		R727	1-249-419-11	CARBON 1.5K 5% 1/4W	
C706	1-164-083-11	CERAMIC 680PF 10% 50V		R728	1-249-415-11	CARBON 680 5% 1/4W	
C707	1-164-083-11	CERAMIC 680PF 10% 50V		R729	1-249-411-11	CARBON 330 5% 1/4W	
C708	1-164-081-11	CERAMIC 470PF 10% 50V		R730	1-215-923-00	METAL OXIDE 10K 5% 3W	F
C709	1-164-081-11	CERAMIC 470PF 10% 50V		R732	1-249-412-11	CARBON 390 5% 1/4W	
C710	1-164-081-11	CERAMIC 470PF 10% 50V		R733	1-249-422-11	CARBON 2.7K 5% 1/4W	
C712	1-124-477-11	ELECT 47MF 20% 16V		R734	1-249-422-11	CARBON 2.7K 5% 1/4W	
C721	1-161-754-00	CERAMIC 0.001MF 10% 2KV		R735	1-249-393-11	CARBON 10 5% 1/4W	
				R737	1-215-923-00	METAL OXIDE 10K 5% 3W	F



Les composants identifiés par une
trame et une marque Δ sont
critiques pour la sécurité.
Ne les remplacer que par une pièce
portant le numéro spécifié.

The components identified by
shading and mark Δ are critical
for safety.
Replace only with part number
specified.

REF.NO.	PART NO.	DESCRIPTION				REMARK	REF.NO.	PART NO.	DESCRIPTION				REMARK	
R738	1-202-719-00	SOLID	1M	10%	1/2W		C128	1-124-477-11	ELECT	47MF	20%	16V		
R739	1-202-842-11	SOLID	220K	10%	1/2W		C129	1-130-479-00	MYLAR	0.0047MF	5%	50V		
R740	1-202-842-11	SOLID	220K	10%	1/2W		C131	1-124-443-00	ELECT	100MF	20%	10V		
							C133	1-126-935-11	ELECT	470MF	20%	16V		
<VARIABLE RESISTOR>														
RV701	1-230-619-11	RES, ADJ, METAL GLAZE	110M				C134	1-124-360-00	ELECT	1000MF	20%	16V		
RV702	1-228-993-00	RES, ADJ, CARBON	4.7K				C135	1-124-360-00	ELECT	1000MF	20%	16V		
RV703	1-228-991-00	RES, ADJ, CARBON	2.2K				C136	1-164-066-11	CERAMIC	68PF	5%	50V		
RV704	1-228-993-00	RES, ADJ, CARBON	4.7K				C137	1-164-066-11	CERAMIC	68PF	5%	50V		
RV705	1-228-991-00	RES, ADJ, CARBON	2.2K				C138	1-164-066-11	CERAMIC	68PF	5%	50V		
RV706	1-228-993-00	RES, ADJ, CARBON	4.7K				C139	1-164-066-11	CERAMIC	68PF	5%	50V		
RV707	1-228-995-00	RES, ADJ, CARBON	22K				C140	1-164-066-11	CERAMIC	68PF	5%	50V		
RV708	1-230-641-11	RES, ADJ, METAL GLAZE	2.2M				C141	1-164-066-11	CERAMIC	68PF	5%	50V		
							C142	1-124-903-11	ELECT	1MF	20%	50V		
							C143	1-124-360-00	ELECT	1000MF	20%	16V		


*A-1345-952-A	D BOARD, COMPLETE (KV-27TS31(U) ONLY)						C172	1-101-006-00	CERAMIC	0.047MF		50V		
	*****						C173	1-102-125-00	CERAMIC	0.0047MF	10%	50V		
*A-1345-963-A	D BOARD, COMPLETE (KV-27TS27(U) ONLY)						C174	1-126-935-11	ELECT	470MF	20%	16V		
	*****						C176	1-126-935-11	ELECT	470MF	20%	16V		
*A-1345-989-A	D BOARD, COMPLETE (KV-27TS27(C) ONLY)						C329	1-124-477-11	ELECT	47MF	20%	16V		
	*****						C345	1-124-907-11	ELECT	10MF	20%	50V		
*A-1345-990-A	D BOARD, COMPLETE (KV-27TS31(C) ONLY)						C346	1-124-903-11	ELECT	1MF	20%	50V		
	*****						C351	1-124-907-11	ELECT	10MF	20%	50V		
							C352	1-124-907-11	ELECT	10MF	20%	50V		
*4-032-238-01	SHIELD, TRANSFORMER						C353	1-124-477-11	ELECT	47MF	20%	16V		
*4-032-240-01	SUPPORT, B													
*4-032-369-01	SHEET, RADIATION						C354	1-124-477-11	ELECT	47MF	(KV-27TS31(U/C) ONLY)	20%	16V	
*4-341-751-01	EYELET (EY19,EY20,EY25-EY35,EY38-EY44, EY46,EY48-EY52,EY77,EY78,EY90-EY107)						C355	1-126-233-11	ELECT	22MF	(KV-27TS31(U/C) ONLY)	20%	25V	
*4-341-752-01	EYELET (EY1,EY2,EY4-EY17,EY21-EY24,EY53, EY54,EY59-EY64,EY66-EY68,EY70-EY72,EY79- EY84)						C356	1-126-233-11	ELECT	22MF	(KV-27TS31(U/C) ONLY)	20%	25V	
*4-381-724-01	HOLDER, IC						C357	1-124-478-11	ELECT	100MF	(KV-27TS31(U/C) ONLY)	20%	25V	
*4-382-854-11	SCREW (M3X10), P, SW (+)						C358	1-124-478-11	ELECT	100MF	(KV-27TS31(U/C) ONLY)	20%	25V	
*4-393-401-01	SPRING													
<CAPACITOR>														
C101	1-124-907-11	ELECT	10MF	20%	50V		C359	1-101-004-00	CERAMIC	0.01MF	(KV-27TS31(U/C) ONLY)	50V		
C102	1-126-101-11	ELECT	100MF	20%	16V		C360	1-101-004-00	CERAMIC	0.01MF	(KV-27TS31(U/C) ONLY)	50V		
C104	1-126-101-11	ELECT	100MF	20%	16V						(KV-27TS31(U/C) ONLY)	50V		
C105	1-130-481-00	MYLAR	0.0068MF	5%	50V		C361	1-124-902-00	ELECT	0.47MF	20%	50V		
C106	1-130-483-00	MYLAR	0.01MF	5%	50V		C363	1-124-477-11	ELECT	47MF	20%	16V		
C107	1-124-499-11	ELECT	1MF	20%	50V		C430	1-126-233-11	ELECT	22MF	20%	25V		
C108	1-124-499-11	ELECT	1MF	20%	50V		C431	1-124-907-11	ELECT	10MF	20%	50V		
C109	1-124-499-11	ELECT	1MF	20%	50V		C432	1-136-167-00	FILM	0.15MF	5%	50V		
C110	1-124-903-11	ELECT	1MF	20%	50V		C433	1-136-153-00	FILM	0.01MF	5%	50V		
C111	1-164-039-11	CERAMIC	3PF	0.25PF	50V		C434	1-136-153-00	FILM	0.01MF	5%	50V		
C112	1-126-233-11	ELECT	22MF	20%	50V		C435	1-136-167-00	FILM	0.15MF	5%	50V		
C113	1-164-054-11	CERAMIC	22PF	5%	50V		C436	1-124-907-11	ELECT	10MF	20%	50V		
C114	1-124-907-11	ELECT	10MF	20%	50V		C437	1-136-161-00	FILM	0.047MF	5%	50V		
C115	1-124-907-11	ELECT	10MF	20%	50V									
C116	1-124-907-11	ELECT	10MF	20%	50V		C438	1-124-360-00	ELECT	1000MF	20%	16V		
C117	1-124-907-11	ELECT	10MF	20%	50V		C439	1-124-119-00	ELECT	330MF	20%	16V		
C118	1-124-907-11	ELECT	10MF	20%	50V		C440	1-124-907-11	ELECT	10MF	20%	50V		
C119	1-126-233-11	ELECT	22MF	20%	50V		C441	1-124-907-11	ELECT	10MF	20%	50V		
C120	1-130-483-00	MYLAR	0.01MF	5%	50V		C442	1-124-907-11	ELECT	10MF	20%	50V		
C121	1-101-006-00	CERAMIC	0.047MF		50V									
C122	1-164-066-11	CERAMIC	68PF	5%	50V		C445	1-124-903-11	ELECT	1MF	20%	50V		
C123	1-136-161-00	FILM	0.047MF	5%	50V		C446	1-124-903-11	ELECT	1MF	20%	50V		
C124	1-102-978-00	CERAMIC	220PF	5%	50V		C501	1-136-173-00	FILM	0.47MF	5%	50V		
C125	1-124-903-11	ELECT	1MF	20%	50V		C502	1-164-081-11	CERAMIC	470PF	10%	50V		
C126	1-124-907-11	ELECT	10MF	20%	50V		C503	1-102-244-00	CERAMIC	220PF	10%	500V		
C127	1-164-082-11	CERAMIC	560PF	10%	50V									
							C504	1-136-187-11	FILM	0.047MF	10%	250V		
							C505	1-162-116-00	CERAMIC	680PF	10%	2KV		
							C506	1-162-116-00	CERAMIC	680PF	10%	2KV		
							C507	1-106-371-00	MYLAR	0.015MF	5%	100V		
							C508	1-162-115-91	CERAMIC	330PF	10%	2KV		

The components identified by shading and mark Δ are critical for safety.
Replace only with part number specified.

Les composants identifiés par une trame et une marque Δ sont critiques pour la sécurité.
Ne les remplacer que par une pièce portant le numéro spécifié.

D

REF.NO.	PART NO.	DESCRIPTION	REMARK	REF.NO.	PART NO.	DESCRIPTION	REMARK
C509	1-123-024-21	ELECT	33MF	160V			
C510	1-106-395-00	MYLAR	0.15MF	10%	200V		
C511	1-136-113-00	FILM	2MF	5%	200V		
C512	1-124-634-11	ELECT	1MF	20%	250V		
C513	1-164-081-11	CERAMIC	470PF	10%	50V		
C514	1-102-228-00	CERAMIC	470PF	10%	500V		
C515 Δ	1-137-347-11	FILM	0.022MF	3%	2KV		
C516 Δ	1-136-316-51	FILM	0.056MF	5%	630V		
C517	1-136-124-00	FILM	0.56MF	5%	400V		
C518	1-162-318-11	CERAMIC	0.001MF	10%	500V		
C519	1-124-046-00	ELECT	10MF	20%	160V		
C520	1-102-228-00	CERAMIC	470PF	10%	500V		
C521	1-162-117-00	CERAMIC	100PF	10%	500V		
C522	1-124-637-11	ELECT	1000MF	20%	50V		
C523	1-162-117-00	CERAMIC	100PF	10%	500V		
C524	1-124-557-11	ELECT	1000MF	20%	25V		
C525	1-123-947-00	ELECT	10MF	20%	250V		
C526	1-162-114-00	CERAMIC	0.0047MF		2KV		
C527	1-106-383-00	MYLAR	0.047MF		200V		
C528	1-106-367-00	MYLAR	0.01MF	5%	100V		
C529	1-124-607-11	ELECT	2200MF	20%	50V		
C530	1-124-122-11	ELECT	100MF	20%	50V		
C531	1-130-777-00	FILM	0.1MF	10%	100V		
C532	1-102-030-00	CERAMIC	330PF	10%	500V		
C533	1-130-777-00	FILM	0.1MF	10%	100V		
C534	1-102-125-00	CERAMIC	0.0047MF	10%	50V		
C535	1-123-932-00	ELECT	4.7MF	20%	160V		
C536	1-124-477-11	ELECT	47MF	20%	25V		
C539	1-161-959-00	CERAMIC	22PF	10%	500V		
C540	1-102-030-00	CERAMIC	330PF	10%	500V		
C542	1-124-046-00	ELECT	10MF	20%	160V		
C543	1-136-157-00	FILM	0.022MF	5%	50V		
C599	1-123-024-21	ELECT	33MF		160V		
C602	1-101-006-00	CERAMIC	0.047MF		50V		
C603	1-136-165-00	FILM	0.1MF	5%	50V		
C604	1-164-646-11	CERAMIC	2200PF	10%	500V		
C606	1-162-599-12	CERAMIC	0.0047MF	20%	400V		
C607	1-162-599-12	CERAMIC	0.0047MF	20%	400V		
C608 Δ	1-125-692-11	ELECT (BLOCK)	820MF	20%	200V		
C609	1-164-645-11	CERAMIC	1000PF	10%	500V		
C610	1-136-165-00	FILM	0.1MF	5%	50V		
C611	1-164-646-11	CERAMIC	2200PF	10%	500V		
C612	1-130-959-00	FILM	0.047MF	10%	400V		
C613	1-130-959-00	FILM	0.047MF	10%	400V		
C614	1-164-645-11	CERAMIC	1000PF	10%	500V		
C615	1-123-024-21	ELECT	33MF		160V		
C616	1-164-644-11	CERAMIC	330PF	10%	500V		
C617	1-136-165-00	FILM	0.1MF	5%	50V		
C618	1-124-119-00	ELECT	330MF	20%	16V		
C619	1-124-557-11	ELECT	1000MF	20%	25V		
C620	1-124-360-00	ELECT	1000MF	20%	16V		
C621	1-124-557-11	ELECT	1000MF	20%	25V		
C622	1-102-125-00	CERAMIC	0.0047MF	10%	50V		
C623	1-124-119-00	ELECT	330MF	20%	16V		
C624	1-161-742-00	CERAMIC	0.0022MF	20%	400V		
C625	1-126-101-11	ELECT	100MF	20%	16V		
C626	1-161-742-00	CERAMIC	0.0022MF	20%	400V		
C627	1-102-125-00	CERAMIC	0.0047MF	10%	50V		
C633	1-126-101-11	ELECT	100MF	20%	16V		
C634	1-124-478-11	ELECT	100MF	20%	25V		
C635	1-126-101-11	ELECT	100MF	20%	16V		
C636	1-124-907-11	ELECT	10MF	20%	50V		
C639	1-126-233-11	ELECT	22MF	20%	25V		
C650	1-124-119-00	ELECT	330MF	20%	16V		
				<FILTER BLOCK>			
CM351	1-466-162-31	BLOCK, COM FILTER (CFB-4)					
				<NETWORK>			
CP101	1-236-524-11	NETWORK, C					
CP102	1-236-479-11	NETWORK, C					
CP103	1-236-301-11	NETWORK, C					
CP104	1-236-300-11	NETWORK, C					
CP105	1-236-524-11	NETWORK, C					
CP106	1-236-301-11	NETWORK, C					
CP107	1-236-479-11	NETWORK, C					
CP108	1-236-358-21	NETWORK, RES					
				<CONNECTOR>			
D1	*1-564-508-11	PLUG, CONNECTOR 5P (KV-27TS31(U/C) ONLY)					
D2	*1-508-768-00	PIN, CONNECTOR (5MM PITCH) 6P					
D3	1-573-298-11	CONNECTOR, BOARD TO BOARD 20P					
D4	1-573-298-11	CONNECTOR, BOARD TO BOARD 20P					
D5	1-573-298-11	CONNECTOR, BOARD TO BOARD 20P					
D6	*1-508-784-00	PIN, CONNECTOR (5MM PITCH) 1P					
D7	1-573-297-11	CONNECTOR, BOARD TO BOARD 18P					
D8	*1-564-506-11	PLUG, CONNECTOR 3P					
D9	*1-508-766-00	PIN, CONNECTOR (5MM PITCH) 4P					
D10	1-573-297-11	CONNECTOR, BOARD TO BOARD 18P					
D15	*1-560-290-00	PLUG, CONNECTOR (2.5MM PITCH)					
D18	*1-564-507-11	PLUG, CONNECTOR 4P					
DY1	*1-568-536-11	PLUG (MINIATURE DY) 6P					
JL21	*1-508-784-00	PIN, CONNECTOR (5MM PITCH) 1P					
				<DIODE>			
D101	8-719-110-78	DIODE RD33ES-B2					
D103	8-719-109-74	DIODE RD4.3ES-B1					
D104	8-719-911-19	DIODE 1SS119					
D105	8-719-911-19	DIODE 1SS119 (KV-27TS31(U/C) ONLY)					
D107	1-809-401-11	LED UNIT					
D108	1-809-401-11	LED UNIT					
D109	8-719-911-19	DIODE 1SS119					
D110	8-719-911-19	DIODE 1SS119					
D111	8-719-911-19	DIODE 1SS119					
D112	8-719-911-19	DIODE 1SS119					
D113	8-719-911-19	DIODE 1SS119					
D114	8-719-911-19	DIODE 1SS119					
D115	8-719-109-84	DIODE RD5.1ES-B1					
D116	8-719-109-84	DIODE RD5.1ES-B1					
D117	8-719-911-19	DIODE 1SS119					
D118	8-719-911-19	DIODE 1SS119					
D119	8-719-109-84	DIODE RD5.1ES-B1					
D120	8-719-911-19	DIODE 1SS119					
D431	8-719-911-19	DIODE 1SS119					
D432	8-719-911-19	DIODE 1SS119					
D504	8-719-945-80	DIODE ERC06-15S					
D505	8-719-945-80	DIODE ERC06-15S					
D506	8-719-900-26	DIODE ERD29-08J					
D507	8-719-302-43	DIODE EL17					
D508	8-719-971-20	DIODE ERC38-06					
D509	8-719-979-85	DIODE EGP20G					
D510	8-719-300-33	DIODE RU-3AM					
D511	8-719-976-64	DIODE RGPQ2-17					
D512	8-719-200-02	DIODE 10E2					

The components identified by shading and mark  are critical for safety.
Replace only with part number specified.

— 66 —

D

REF. NO.	PART NO.	DESCRIPTION	REMARK	REF. NO.	PART NO.	DESCRIPTION	REMARK
R114	1-249-409-11	CARBON	220 5% 1/4W	R182	1-249-409-11	CARBON	220 5% 1/4W
R116	1-249-409-11	CARBON	220 5% 1/4W	R184	1-249-429-11	CARBON	10K 5% 1/4W
R117	1-249-409-11	CARBON	220 5% 1/4W	R186	1-247-903-00	CARBON	1M 5% 1/4W
R118	1-249-409-11	CARBON	220 5% 1/4W	R187	1-249-441-11	CARBON	100K 5% 1/4W
R119	1-249-429-11	CARBON	10K 5% 1/4W	R188	1-247-903-00	CARBON	1M 5% 1/4W
R120	1-249-409-11	CARBON	220 5% 1/4W	R189	1-249-429-11	CARBON	10K 5% 1/4W
R121	1-249-425-11	CARBON	4.7K 5% 1/4W	R190	1-249-429-11	CARBON	10K 5% 1/4W
R122	1-249-409-11	CARBON	220 5% 1/4W	R191	1-249-429-11	CARBON	10K 5% 1/4W
R123	1-249-409-11	CARBON	220 5% 1/4W	R192	1-249-427-11	CARBON	6.8K 5% 1/4W
R124	1-249-409-11	CARBON	220 5% 1/4W	R193	1-249-425-11	CARBON	4.7K 5% 1/4W
R125	1-249-430-11	CARBON	12K 5% 1/4W	R194	1-249-429-11	CARBON	10K 5% 1/4W
R126	1-249-423-11	CARBON	3.3K 5% 1/4W	R195	1-249-429-11	CARBON	10K 5% 1/4W
R127	1-249-419-11	CARBON	1.5K 5% 1/4W	R196	1-249-429-11	CARBON	10K 5% 1/4W
R128	1-249-431-11	CARBON	15K 5% 1/4W	R197	1-249-423-11	CARBON	3.3K 5% 1/4W
R129	1-249-417-11	CARBON	1K 5% 1/4W	R199	1-249-429-11	CARBON	10K 5% 1/4W
R130	1-249-421-11	CARBON	2.2K 5% 1/4W	R345	1-249-425-11	CARBON	4.7K 5% 1/4W
R131	1-249-429-11	CARBON	10K 5% 1/4W	R346	1-249-436-11	CARBON	39K 5% 1/4W
R132	1-249-429-11	CARBON	10K 5% 1/4W	R347	1-249-435-11	CARBON	33K 5% 1/4W
R133	1-249-409-11	CARBON	220 5% 1/4W	R348	1-249-429-11	CARBON	10K 5% 1/4W
R134	1-249-409-11	CARBON	220 5% 1/4W	R349	1-249-429-11	CARBON	10K 5% 1/4W
R135	1-249-409-11	CARBON	220 5% 1/4W	R350	1-249-429-11	CARBON	10K 5% 1/4W
R136	1-249-409-11	CARBON	220 5% 1/4W	R351	1-249-429-11	CARBON	10K 5% 1/4W
R137	1-249-409-11	CARBON	220 5% 1/4W	R352	1-249-425-11	CARBON	4.7K 5% 1/4W
R140	1-249-409-11	CARBON	220 5% 1/4W	R353	1-249-417-11	CARBON	1K 5% 1/4W
R141	1-249-409-11	CARBON	220 5% 1/4W	R354	1-249-414-11	CARBON	560 5% 1/4W
R142	1-249-409-11	CARBON	220 5% 1/4W	(KV-27TS31(U/C) ONLY)			
R143	1-249-409-11	CARBON	220 5% 1/4W	R355	1-249-414-11	CARBON	560 5% 1/4W
R144	1-249-409-11	CARBON	220 5% 1/4W	(KV-27TS31(U/C) ONLY)			
R145	1-249-421-11	CARBON	2.2K 5% 1/4W		1-249-417-11	CARBON	1K 5% 1/4W
R146	1-249-421-11	CARBON	2.2K 5% 1/4W	(KV-27TS27(U/C) ONLY)			
R147	1-249-421-11	CARBON	2.2K 5% 1/4W	R356	1-249-414-11	CARBON	560 5% 1/4W
R148	1-249-409-11	CARBON	220 5% 1/4W	(KV-27TS31(U/C) ONLY)			
R149	1-249-409-11	CARBON	220 5% 1/4W	R357	1-249-414-11	CARBON	560 5% 1/4W
R150	1-249-409-11	CARBON	220 5% 1/4W	(KV-27TS31(U/C) ONLY)			
R151	1-249-429-11	CARBON	10K 5% 1/4W		1-249-417-11	CARBON	1K 5% 1/4W
R152	1-249-409-11	CARBON	220 5% 1/4W	(KV-27TS27(U/C) ONLY)			
R153	1-249-429-11	CARBON	10K 5% 1/4W	R358	1-249-417-11	CARBON	1K 5% 1/4W
R154	1-249-437-11	CARBON	47K 5% 1/4W	R359	1-249-414-11	CARBON	560 5% 1/4W
R155	1-249-417-11	CARBON	1K 5% 1/4W	R360	1-249-415-11	CARBON	680 5% 1/4W
R156	1-249-409-11	CARBON	220 5% 1/4W	R361	1-249-417-11	CARBON	1K 5% 1/4W
R157	1-249-417-11	CARBON	1K 5% 1/4W	R363	1-249-405-11	CARBON	100 5% 1/4W
R158	1-249-429-11	CARBON	10K 5% 1/4W	R364	1-249-429-11	CARBON	10K 5% 1/4W
R159	1-249-429-11	CARBON	10K 5% 1/4W	R365	1-249-437-11	CARBON	47K 5% 1/4W
R160	1-249-405-11	CARBON	100 5% 1/4W	R367	1-249-415-11	CARBON	680 5% 1/4W
R161	1-215-923-00	METAL OXIDE	10K 5% 3W F	R369	1-249-405-11	CARBON	100 5% 1/4W
R162	1-249-417-11	CARBON	1K 5% 1/4W	R431	1-249-425-11	CARBON	4.7K 5% 1/4W
R163	1-247-883-00	CARBON	150K 5% 1/4W	R432	1-249-425-11	CARBON	4.7K 5% 1/4W
R164	1-249-437-11	CARBON	47K 5% 1/4W	R433	1-249-425-11	CARBON	4.7K 5% 1/4W
R165	1-247-883-00	CARBON	150K 5% 1/4W	R434	1-249-426-11	CARBON	5.6K 5% 1/4W
R166	1-249-437-11	CARBON	47K 5% 1/4W	R435	1-249-426-11	CARBON	5.6K 5% 1/4W
R167	1-247-883-00	CARBON	150K 5% 1/4W	R436	1-249-426-11	CARBON	5.6K 5% 1/4W
R168	1-249-437-11	CARBON	47K 5% 1/4W	R437	1-249-426-11	CARBON	5.6K 5% 1/4W
R169	1-249-427-11	CARBON	6.8K 5% 1/4W	R438	1-249-423-11	CARBON	3.3K 5% 1/4W
R170	1-249-429-11	CARBON	10K 5% 1/4W	R439	1-249-425-11	CARBON	4.7K 5% 1/4W
R171	1-249-435-11	CARBON	33K 5% 1/4W	R440	1-249-428-11	CARBON	8.2K 5% 1/4W
R172	1-249-429-11	CARBON	10K 5% 1/4W	R441	1-249-428-11	CARBON	8.2K 5% 1/4W
R173	1-249-425-11	CARBON	4.7K 5% 1/4W	R442	1-249-421-11	CARBON	2.2K 5% 1/4W
R174	1-249-428-11	CARBON	8.2K 5% 1/4W	R443	1-249-417-11	CARBON	1K 5% 1/4W
R175	1-249-425-11	CARBON	4.7K 5% 1/4W	R444	1-249-423-11	CARBON	3.3K 5% 1/4W
R176	1-249-440-11	CARBON	82K 5% 1/4W	R445	1-249-429-11	CARBON	10K 5% 1/4W
R177	1-249-426-11	CARBON	5.6K 5% 1/4W	R446	1-249-429-11	CARBON	10K 5% 1/4W
R178	1-249-425-11	CARBON	4.7K 5% 1/4W	R447	1-249-405-11	CARBON	100 5% 1/4W
R179	1-249-427-11	CARBON	6.8K 5% 1/4W	R448	1-249-417-11	CARBON	1K 5% 1/4W
R181	1-249-425-11	CARBON	4.7K 5% 1/4W				

D E

The components identified by **■** in this manual have been carefully factory-selected for each set in order to satisfy regulations regarding X-ray radiation.
Should replacement be required, replace only with the value originally used.

Les composants identifiés par une trame et une marque **Δ** sont critiques pour la sécurité.
Ne les remplacer que par une pièce portant le numéro spécifié.

The components identified by shading and mark **Δ** are critical for safety.
Replace only with part number specified.

REF. NO.	PART NO.	DESCRIPTION	REMARK
R449	1-249-405-11	CARBON	100 5% 1/4W
R450	1-249-391-11	CARBON	6.8 5% 1/4W
R451	1-249-402-11	CARBON	56 5% 1/4W
R452	1-249-409-11	CARBON	220 5% 1/4W
R455	1-249-417-11	CARBON	1K 5% 1/4W
R456	1-249-405-11	CARBON	100 5% 1/4W
R457	1-249-405-11	CARBON	100 5% 1/4W
R494	1-249-405-11	CARBON	100 5% 1/4W
R497	1-249-405-11	CARBON	100 5% 1/4W
R501	1-249-405-11	CARBON	100 5% 1/4W
R502	1-249-423-11	CARBON	3.3K 5% 1/4W
R503	1-249-426-11	CARBON	5.6K 5% 1/4W F
R504	Δ 1-215-918-51	METAL OXIDE	1.5K 5% 3W F
R505	1-216-342-11	METAL OXIDE	0.27 5% 1W F
R506	1-249-401-11	CARBON	47 5% 1/4W
R507	1-249-427-11	CARBON	6.8K 5% 1/4W
R508	1-249-455-11	CARBON	4.7 5% 1/4W F
R509	1-249-423-11	CARBON	3.3K 5% 1/4W
R510	1-215-896-00	METAL OXIDE	4.7K 5% 2W F
R512	1-215-861-00	METAL OXIDE	47 5% 1W F
R514	Δ 1-249-415-91	CARBON	680 5% 1/4W F
R515	1-249-421-11	CARBON	2.2K 5% 1/4W
R520	1-249-389-11	CARBON	4.7 5% 1/4W F
R521	1-249-448-11	CARBON	1.2 5% 1/4W F
R522	1-216-375-00	METAL OXIDE	3.3 5% 2W F
R523	Δ 1-216-345-91	METAL OXIDE	0.47 5% 1W F
R524	1-216-373-11	METAL OXIDE	2.2 5% 2W F
R525	Δ 1-249-448-91	CARBON	1.2 5% 1/4W F
R526	Δ 1-216-434-91	METAL OXIDE	1.8K 5% 1W F
R527	1-216-429-00	METAL OXIDE	270 5% 1W F
R530	1-249-436-11	CARBON	39K 5% 1/4W
R534	1-249-435-11	CARBON	33K 5% 1/4W
R535	1-215-373-31	METAL	10 1% 1/4W
R536	1-249-425-11	CARBON	4.7K 5% 1/4W
R538	1-202-838-00	SOLID	100K 10% 1/2W
R539	1-202-838-00	SOLID	100K 10% 1/2W
R540	1-202-838-00	SOLID	100K 10% 1/2W
R541	1-202-838-00	SOLID	100K 10% 1/2W
■ R542	Δ	METAL	1/6W
■ R543	Δ	METAL	1/6W
R544	1-249-429-11	CARBON	10K 5% 1/4W
R545	1-249-417-11	CARBON	1K 5% 1/4W
R546	1-249-417-11	CARBON	1K 5% 1/4W F
R547	1-202-833-91	SOLID	18K 10% 1/2W
R548	1-216-369-00	METAL OXIDE	1 5% 2W F
R603	1-215-900-11	METAL OXIDE	22K 5% 2W F
R604	Δ 1-216-444-91	METAL OXIDE	82K 5% 1W F
R605	1-216-369-00	METAL OXIDE	1 5% 2W F
R606	1-215-878-00	METAL OXIDE	33K 5% 1W F
R607	1-216-377-11	METAL OXIDE	4.7 5% 2W F
R609	1-216-369-00	METAL OXIDE	1 5% 2W F
R610	1-215-878-00	METAL OXIDE	33K 5% 1W F
R611	1-207-645-00	WIREWOUND	0.47 5% 3W F
R612	1-215-417-00	METAL	680 1% 1/4W
R613	1-215-477-00	METAL	220K 1% 1/4W
R614	1-249-441-11	CARBON	100K 5% 1/4W
R615	1-249-429-11	CARBON	10K 5% 1/4W
R616	1-247-895-00	CARBON	470K 5% 1/4W
R617	1-216-377-11	METAL OXIDE	4.7 5% 2W F
R619	1-249-421-11	CARBON	2.2K 5% 1/4W
R620	1-247-708-11	CARBON	470 5% 1/4W F
R621	1-249-429-11	CARBON	10K 5% 1/4W
R622	1-247-747-11	CARBON	470 5% 1/2W F
R623	1-249-405-11	CARBON	100 5% 1/4W F

REF. NO.	PART NO.	DESCRIPTION	REMARK
R626	1-249-389-11	CARBON	4.7 5% 1/4W F
R628	1-249-423-11	CARBON	3.3K 5% 1/4W
R629	1-249-416-11	CARBON	820 5% 1/4W
R630	1-249-416-11	CARBON	820 5% 1/4W
R631	1-202-730-00	SOLID	8.2M 10% 1/2W
R632	1-215-892-11	METAL OXIDE	1K 5% 2W F
R633	1-216-426-11	METAL OXIDE	82 5% 1W F
R640	1-216-379-11	METAL OXIDE	6.8 5% 2W F
R645	1-216-379-11	METAL OXIDE	6.8 5% 2W F
R646	1-249-393-11	CARBON	10 5% 1/4W
R647	1-249-385-11	CARBON	2.2 5% 1/4W F
R648	1-249-393-11	CARBON	10 5% 1/4W F
R649	1-249-409-11	CARBON	220 5% 1/4W
R650	1-247-713-11	CARBON	1K 5% 1/4W F
R651	1-249-377-11	CARBON	0.47 5% 1/4W F
R652	1-249-377-11	CARBON	0.47 5% 1/4W F
R653	1-249-377-11	CARBON	0.47 5% 1/4W F
R654	1-249-377-11	CARBON	0.47 5% 1/4W F
R655	1-249-377-11	CARBON	0.47 5% 1/4W F
R656	1-249-377-11	CARBON	0.47 5% 1/4W F
R657	1-249-377-11	CARBON	0.47 5% 1/4W F
R658	1-249-377-11	CARBON	0.47 5% 1/4W F
R659	1-249-377-11	CARBON	0.47 5% 1/4W F
<VARIABLE RESISTOR>			
RV101	1-238-023-11	RES, ADJ, CARBON 470K	
<SWITCH>			
S101	Δ 1-571-532-23	SWITCH, TACTIL (POWER)	
S102	1-571-532-21	SWITCH, TACTIL	
S103	1-571-532-21	SWITCH, TACTIL	
S104	1-571-532-21	SWITCH, TACTIL	
S105	1-571-532-21	SWITCH, TACTIL	
S106	1-571-532-21	SWITCH, TACTIL	
<SPARK GAP>			
SG501	1-519-422-11	GAP, SPARK	
<TRANSFORMER>			
T501	Δ 1-437-195-12	TRANSFORMER, HORIZONTAL DRIVE	
T502	Δ 1-424-545-11	TRANSFORMER, FERRITE (PMT)	
T503	Δ 1-439-502-11	TRANSFORMER ASSY, FLYBACK (NX-2600A3)	
T604	1-450-559-11	TRANSFORMER, CONVERTER (PRT)	
T605	1-450-560-11	TRANSFORMER, FERRITE (SBT)	
<TUNER>			
TU101	Δ 1-465-371-11	TUNER, ET (BTP-RA401) (KV-27TS27(U), KV-27TS31(U) ONLY)	
	Δ 1-465-371-21	TUNER, ET (BTP-RA401) (KV-27TS27(C), KV-27TS31(C) ONLY)	
<CRYSTAL>			
X101	1-577-082-11	VIBRATOR, CERAMIC	

A-1345-953-A E BOARD, COMPLETE			

E

REF.NO.	PART NO.	DESCRIPTION	REMARK	REF.NO.	PART NO.	DESCRIPTION	REMARK
<CAPACITOR>				R559	1-216-083-00	METAL GLAZE 27K 5%	1/10W
C551	1-124-925-11	ELECT 2.2MF 20%	50V	R561	1-216-371-00	METAL OXIDE 1.5 5%	2W F
C553	1-124-907-11	ELECT 10MF 20%	50V	R562	1-216-061-00	METAL GLAZE 3.3K 5%	1/10W
C554	1-126-329-11	ELECT 470MF 10%	50V	R563	1-216-067-00	METAL GLAZE 5.6K 5%	1/10W
C556	1-124-925-11	ELECT 2.2MF 20%	50V	R564	1-216-029-00	METAL GLAZE 150 5%	1/10W
C557	1-124-925-11	ELECT 2.2MF 20%	50V	R566	1-216-295-00	METAL GLAZE 0 5%	1/10W
C558	1-124-637-11	ELECT 1000MF 20%	50V	R567	1-216-081-00	METAL GLAZE 22K 5%	1/10W
C575	1-124-478-11	ELECT 100MF 20%	25V	R568	1-247-700-11	CARBON 100 5%	1/4W F
C578	1-124-480-11	ELECT 470MF 20%	25V	R570	1-216-063-00	METAL GLAZE 3.9K 5%	1/10W
C579	1-124-925-11	ELECT 2.2MF 20%	50V	R571	1-216-085-00	METAL GLAZE 33K 5%	1/10W
C580	1-130-497-00	MYLAR 0.15MF 5%	50V	R588	1-216-089-00	METAL GLAZE 47K 5%	1/10W
C581	1-124-925-11	ELECT 2.2MF 20%	50V	R1514	1-216-085-00	METAL GLAZE 33K 5%	1/10W
C1520	1-106-351-00	MYLAR 0.0022MF 10%	100V	R1517	1-215-920-11	METAL OXIDE 3.3K 5%	3W F
C1522	1-124-925-11	ELECT 2.2MF 20%	50V	R1520	1-216-091-00	METAL GLAZE 56K 5%	1/10W
C1534	1-106-351-00	MYLAR 0.0022MF 10%	100V	R1521	1-216-063-00	METAL GLAZE 3.9K 5%	1/10W
C1536	1-106-383-00	MYLAR 0.047MF 10%	100V	R1522	1-216-097-00	METAL GLAZE 100K 5%	1/10W
C1538	1-124-907-11	ELECT 10MF 20%	50V	R1523	1-216-073-00	METAL GLAZE 10K 5%	1/10W
C1539	1-124-925-11	ELECT 2.2MF 20%	50V	R1524	1-216-073-00	METAL GLAZE 10K 5%	1/10W
C1540	1-106-343-00	MYLAR 0.001MF 10%	100V	R1525	1-216-073-00	METAL GLAZE 10K 5%	1/10W
C1541	1-124-927-11	ELECT 4.7MF 20%	50V	R1526	1-216-073-00	METAL GLAZE 10K 5%	1/10W
C1542	1-124-927-11	ELECT 4.7MF 20%	50V	R1527	1-216-295-00	METAL GLAZE 0 5%	1/10W
C1543	1-124-925-11	ELECT 2.2MF 20%	50V	R1528	1-216-295-00	METAL GLAZE 0 5%	1/10W
C1544	1-124-927-11	ELECT 4.7MF 20%	50V	R1529	1-216-103-00	METAL GLAZE 180K 5%	1/10W
C1545	1-124-767-00	ELECT 2.2MF 20%	50V	R1530	1-216-081-00	METAL GLAZE 22K 5%	1/10W
C1548	1-124-925-11	ELECT 2.2MF 20%	50V	R1531	1-216-049-00	METAL GLAZE 1K 5%	1/10W
<DIODE>				R1532	1-216-049-00	METAL GLAZE 1K 5%	1/10W
D551	8-719-404-46	DIODE MA110		R1533	1-216-033-00	METAL GLAZE 220 5%	1/10W
D552	8-719-110-72	DIODE RD30ES-B2		R1534	1-216-025-00	METAL GLAZE 100 5%	1/10W
D555	8-719-911-55	DIODE U05G		R1535	1-216-097-00	METAL GLAZE 100K 5%	1/10W
D1520	8-719-109-88	DIODE RD5.6ES-B1		R1536	1-216-097-00	METAL GLAZE 100K 5%	1/10W
D1521	8-719-404-46	DIODE MA110		R1537	1-216-081-00	METAL GLAZE 22K 5%	1/10W
D1522	8-719-404-46	DIODE MA110		R1538	1-216-113-00	METAL GLAZE 470K 5%	1/10W
D1523	8-719-404-46	DIODE MA110		R1539	1-216-113-00	METAL GLAZE 470K 5%	1/10W
D1524	8-719-404-46	DIODE MA110		R1540	1-216-105-00	METAL GLAZE 220K 5%	1/10W
<CONNECTOR>				R1541	1-216-073-00	METAL GLAZE 10K 5%	1/10W
E5	1-573-301-11	CONNECTOR, BOARD TO BOARD 20P		R1544	1-216-097-00	METAL GLAZE 100K 5%	1/10W
<IC>				R1545	1-216-073-00	METAL GLAZE 10K 5%	1/10W
IC551	8-759-945-58	IC RC4558P		R1546	1-216-295-00	METAL GLAZE 0 5%	1/10W
IC552	8-759-929-62	IC LM7812CT		R1547	1-216-075-00	METAL GLAZE 12K 5%	1/10W
<TRANSISTOR>				R1548	1-216-073-00	METAL GLAZE 10K 5%	1/10W
Q558	8-729-920-74	TRANSISTOR 2SC2412K-QR		R1549	1-216-079-00	METAL GLAZE 18K 5%	1/10W
Q559	8-729-920-74	TRANSISTOR 2SC2412K-QR		R1550	1-216-061-00	METAL GLAZE 3.3K 5%	1/10W
Q1520	8-729-920-74	TRANSISTOR 2SC2412K-QR		R1551	1-216-061-00	METAL GLAZE 3.3K 5%	1/10W
<RESISTOR>				R1552	1-216-085-00	METAL GLAZE 33K 5%	1/10W
R551	1-216-037-00	METAL GLAZE 330 5%	1/10W	R1553	1-216-081-00	METAL GLAZE 22K 5%	1/10W
R552	1-216-029-00	METAL GLAZE 150 5%	1/10W	R1554	1-247-753-11	CARBON 1.2K 5%	1/2W
R553	1-216-039-00	METAL GLAZE 390 5%	1/10W	R1556	1-216-085-00	METAL GLAZE 33K 5%	1/10W
R554	1-216-043-00	METAL GLAZE 560 5%	1/10W	R1557	1-216-061-00	METAL GLAZE 3.3K 5%	1/10W
R555	1-216-675-11	METAL CHIP 10K 0.50%	1/10W	R1558	1-216-079-00	METAL GLAZE 18K 5%	1/10W
R556	1-216-073-00	METAL GLAZE 10K 5%	1/10W	R1559	1-216-061-00	METAL GLAZE 3.3K 5%	1/10W
R557	1-215-869-11	METAL OXIDE 1K 5%	1W F	R1561	1-247-753-11	CARBON 1.2K 5%	1/2W
R558	1-216-061-00	METAL GLAZE 3.3K 5%	1/10W	R1571	1-215-920-11	METAL OXIDE 3.3K 5%	3W F
<VARIABLE RESISTOR>				RV550	1-238-549-11	RES, ADJ, CARBON 47K	
RV551	1-238-543-11	RES, ADJ, CARBON 470		RV552	1-238-550-11	RES, ADJ, CARBON 100K	
RV552	1-238-550-11	RES, ADJ, CARBON 100K		RV553	1-238-549-11	RES, ADJ, CARBON 47K	
RV553	1-238-549-11	RES, ADJ, CARBON 47K		RV554	1-238-544-11	RES, ADJ, CARBON 1K	
RV554	1-238-544-11	RES, ADJ, CARBON 1K		RV555	1-238-550-11	RES, ADJ, CARBON 100K	
RV555	1-238-550-11	RES, ADJ, CARBON 100K		RV556	1-238-550-11	RES, ADJ, CARBON 100K	
RV556	1-238-552-11	RES, ADJ, CARBON 470K					



Les composants identifiés par une
trame et une marque **Δ** sont
critiques pour la sécurité.
Ne les remplacer que par une pièce
portant le numéro spécifié.

The components identified by
shading and mark **Δ** are critical
for safety.
Replace only with part number
specified.

REF.NO.	PART NO.	DESCRIPTION	REMARK
---------	----------	-------------	--------

<SWITCH>

S551 1-554-186-00 SWITCH, LEVER

MISCELLANEOUS

Δ 1-426-350-11 COIL, DEMAGNETIZATION
Δ 1-451-275-31 DEFLECTION YOKE (Y28PFA)
1-452-032-00 MAGNET, DISK; 10MM φ
1-452-094-00 MAGNET, ROTATABLE DISK; 15MM φ
1-544-549-11 SPEAKER

1-573-657-11 PLUG, F-PIN
Δ 1-590-492-21 CORD, POWER (WITH CONNECTOR)

V901 Δ 8-737-753-05 PICTURE TUBE (A68JMT50X)

ACCESSORIES AND PACKING MATERIALS

PART NO.	DESCRIPTION	REMARK
----------	-------------	--------

1-417-182-11	CONVERTER (EAC-25) (KV-27TS27(C), KV-27TS31(C) ONLY)	
1-562-443-11	CONNECTOR, ANTENNA (KV-27TS27(U), KV-27TS31(U) ONLY)	
4-032-388-21	MANUAL, INSTRUCTION	
4-032-388-31	MANUAL, INSTRUCTION (KV-27TS27(C), KV-27TS31(C) ONLY)	
*4-032-763-01	CUSHION (UPPER) (ASSY)	
*4-032-764-01	CUSHION (LOWER) (ASSY)	
*4-032-765-01	INDIVIDUAL CARTON (FOR SDP)	
*4-032-862-01	INDIVIDUAL CARTON (FOR VTM)	
*4-384-027-01	BAG, PROTECTION	

REMOTE COMMANDER

1-465-772-11	REMOTE COMMANDER (RM-Y101) (KV-27TS31(U/C) ONLY)	
1-465-806-11	REMOTE COMMANDER (RM-791) (KV-27TS27(U/C) ONLY)	
9-900-029-01	COVER, BATTERY (FOR RM-791)	
9-998-985-01	COVER, BATTERY (FOR RM-Y101)	